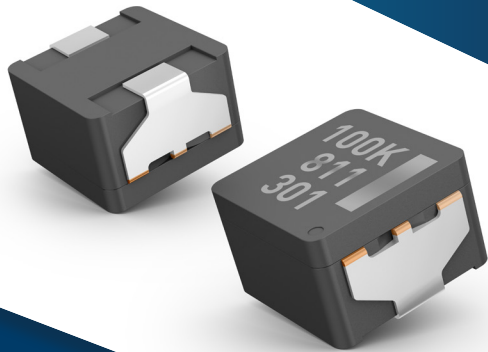


# LE Type Power Choke Coil

## ETQP4M\*\*\*KF\* series



## High efficiency Power Inductors for Automotive & Industrial

New product-line PCC-LE from the Power Choke Coil product family with two package sizes (6x6mm & 7x7mm) and wide inductance range (3.3  $\mu$ H to 47 $\mu$ H), AEC-Q200 compatible. The technology is using unique metal base magnetic core material. Benefits are miniaturized mounting space, none hard saturation characteristics against bias current by metal base magnetic core material and a highly robust monolithic molding structure. Realizing miniaturization (1/2 size compared to ferrite core type) and higher power efficiency by less loss core and coil loss. Unique of this series is a compatible land pattern which enables multisourcing, including ferrite core magnetics inductors.

## Key Features

- Small mounting space with 6.5x6.0 and 7.5x7.0mm product size
- Inductance range from 3.3 $\mu$ H to 47 $\mu$ H
- High current capability with low D.C. resistance, up to 9.2A /3.3 $\mu$ H/13.1m $\Omega$
- Operating temperature -40°C to +150°C
- Multi source land pattern design for compatibility with Ferrite core products
- High reliability (+150°C x 2,000hrs)
- Up to 5MHz switching frequency



### Automotive Safety

- Body control ECU
- ADAS related applications
- Gateway and telematics



### Automotive Comfort

- Instrument Panel
- LED driver
- Navigation / Interface ECU



### Industrial Efficiency

- Collaboration Robots
- Factory Automation
- E-Mobility



For further Information, please contact [Inductor@eu.panasonic.com](mailto:Inductor@eu.panasonic.com)