

MJEC-FP2SSPC No.0074-46V

Read these instructions carefully and carry out the installation in the prescribed manner.  
After installation, keep it in a safe place for reference when required.

### ■ Safety Precautions

#### ⚠ WARNING

- Do not use this product in areas with inflammable gas. It could lead to an explosion.
  - Exposing this product to excessive heat or open flames could lead to damage to the lithium battery or other electronic parts.
  - **WARNING** - Battery may explode if mistreated. Do not recharge, disassemble or dispose of fire.
- <French>  
AVERTISSEMENT - La pile peut exploser en cas de mauvaise utilisation. Elle ne doit pas être rechargée, démontée ou exposée au feu.

#### ⚠ CAUTION

- To prevent excessive exothermic heat or smoke generation, use this product at the values less than the maximum of the characteristics and performance that are assured in these specifications.
- Do not dismantle or remodel the product. It could lead to excessive exothermic heat or smoke generation.
- Use the external devices to function the emergency stop and interlock circuit.
- Connect the wires or connectors securely. The loose connection could lead to excessive exothermic heat or smoke generation.
- This product has been developed / produced for industrial use only.

## 1 Before using the Small PC Card

### ■ Operating environment

- Ambient temperature : 0 to + 55 °C
- Ambient humidity : 30 to 85 % RH ( at 25°C, no condensation )
- Places without excessive dust, oil mist, conductive dust, and any inflammable and corrosive gases.
- Pollution Degree 2
- Places unexposed to water, oil and chemicals.
- Places without excessive vibration or shock.
- Places away from high voltage cables (equipment), power transmission lines (equipment), radio transmitters, equipment that would generate high switching surge and the top of equipment with high calorific power. (Distance: At least 100 mm)

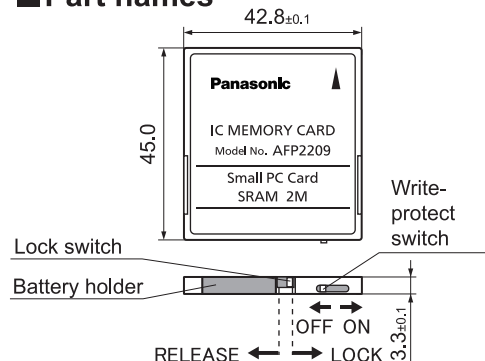
### ■ Proper handling

- Do not touch connector pins directly to prevent static electricity from causing damage.
- Always rid yourself of any static electricity before handling this product.

## 2 Part names and Dimensions

Unit of measurement : mm

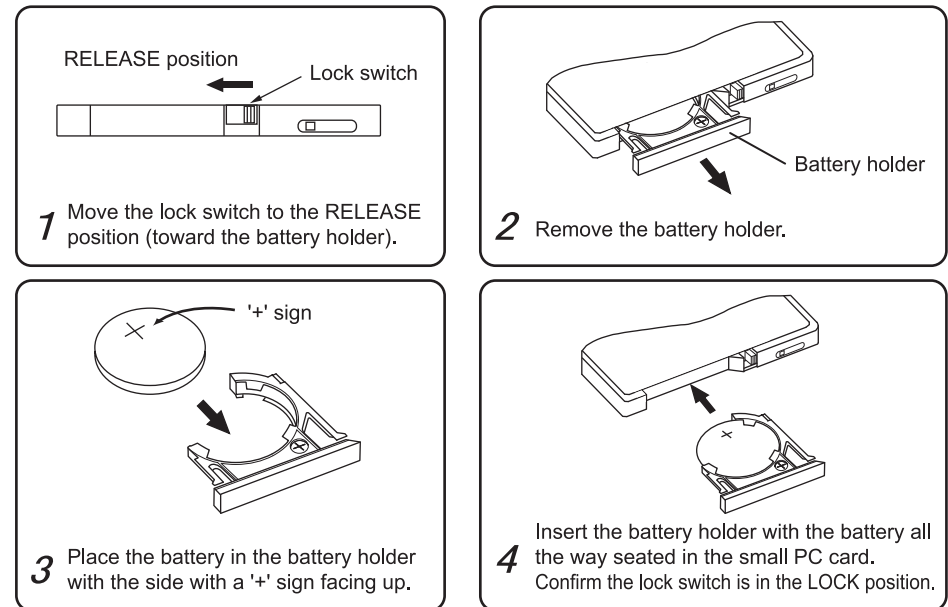
### ■ Part names



Name	Description	
Write-protect switch	ON	Read-only of data
	OFF	Write enable of data
Lock switch *	LOCK	Lock the battery holder
	RELEASE	Release the battery holder
Battery holder	Battery holder	

\* The lock switch is automatically back to the LOCK position when removing the battery holder.

## 3 Installing the battery



\* The lock switch is automatically back to the LOCK position when removing the battery holder.  
In this state, insert the battery holder all the way seated.

\* Battery used: Coin-type lithium battery (Panasonic: BR-1225A)

## 4 Precautions when replacing the battery

- As the data saved in the card is damaged when replacing the battery, the data must be backed up before the replacement.
- Write the backup data into the card before restarting the operation after the replacement.
- The product number for a replacement battery is as follows.  
AFP2806 (Panasonic: BR-1225A)
- For removing the battery, follow the reverse procedure for "Installing the battery".



EU

Category	Manual name
System configuration and hardware specifications	FP2/FP2SH User's Manual
Instructions and programming methods	FP Series Programming Manual

## Panasonic Corporation

Panasonic Industrial Devices SUNX Co., Ltd.  
<https://panasonic.net/id/pidsx/global>

Please visit our website for inquiries and about our sales network.

PRINTED IN JAPAN

© Panasonic Industrial Devices SUNX Co., Ltd. 2022