

Pyroelectric Passive Infrared Motion Sensor Flat Square Type

Panasonic
INDUSTRY

For an Aesthetically Pleasing Product Design

The new "Flat Square Type" can be integrated almost invisibly into any product, thanks to its inconspicuous flat and square lens which hides the typical motion detector look. This sensor is suitable for ceiling-, wall- or corner- mounting and can therefore be used in countless product designs. This passive infrared motion sensor extends the PaPIRs families EKMC (170 μ A) for battery-free and EKMB (1 μ A, 2 μ A and 6 μ A) for battery-operated devices.

Key Features

- Typical detection distance: 5m
- Max. detection zone area (rectangular): 9.3m x 9.3m @3m
- Dimensions top lens: 9.6mm x 9.6mm
- Sensor height: 10,9mm
- Digital output (open drain) with 1, 2, 6 & 170 μ A
- Analog output (op-amp) with 170 μ A
- Analog type includes integrated amplifier circuitry
- Lens colors: white, pearl white, and black

((PaPIRs))



HVAC

- Thermostats & control sensors
- Air conditioners & purifiers
- Ventilators



Lighting

- Lighting control sensors
- Slim luminaires
- Spatial lamps



Others

- Multisensors
- Wake-up switch for AI devices
- Displays



For further Information, please contact info.pieu@eu.panasonic.com

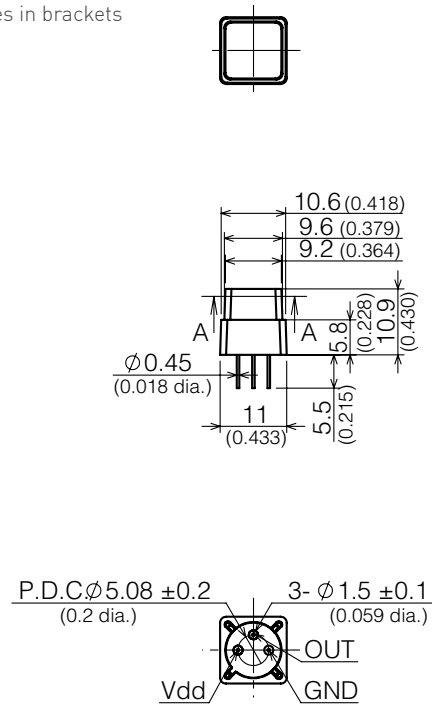
((PaPIRs)))

Pyroelectric Passive Infrared Motion Sensor Flat Square Type

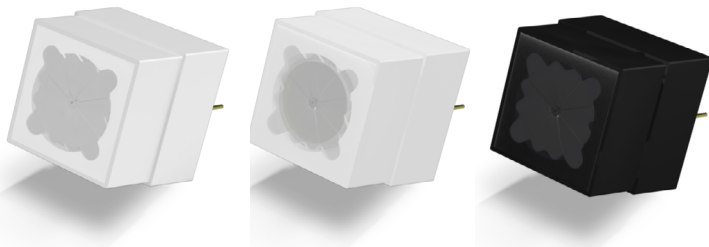
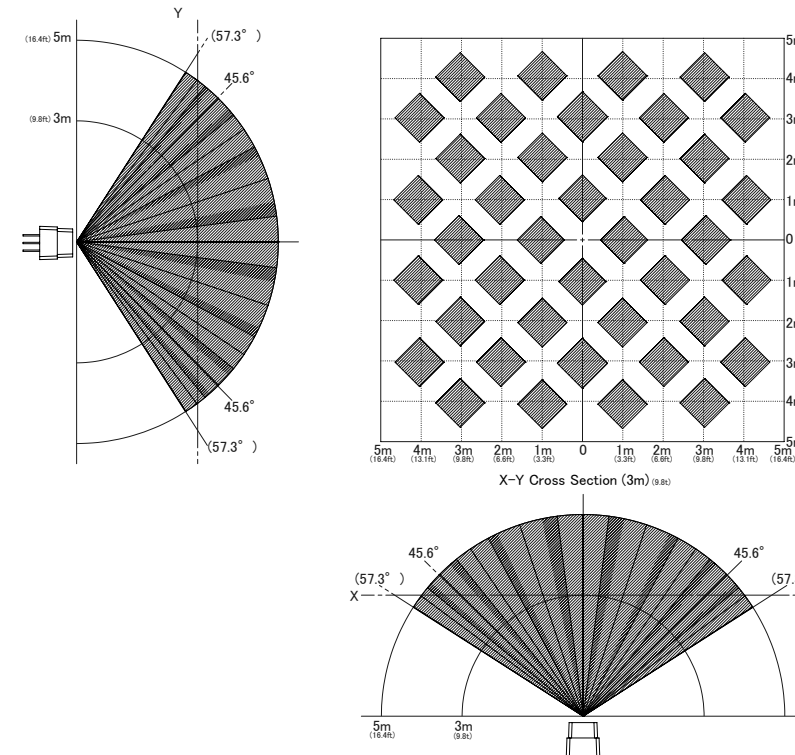
Panasonic
INDUSTRY

Dimensions

In mm, inches in brackets



Detection Area



Discuss applications & request samples info.pieu@eu.panasonic.com