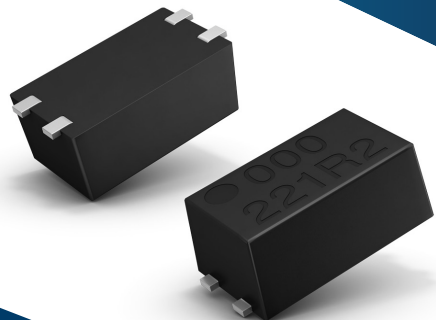


Photovoltaic MOSFET driver

APV series high power type



Choose your power: high current or high voltage output

Photovoltaic MOSFET drivers provide a galvanic separation between control circuits and the power output semiconductors. The new high power type APV3111GVY can even directly switch MOSFETs with a very low ON resistance, thanks to an output voltage of 18V, which saves additional amplifier parts on the PCB. When it comes to high speed switching with high current requirement, APV1111GVY stands out with an unrivalled output current of 45 μ A. Drive directly - and save parts, time and money.

Key Features

- Miniature SSOP package
- 45 μ A output current
- 18V output voltage
- 1,500V isolation voltage
- -40 to +85°C ambient temperature
- Low control current
- Integrated discharge circuit



Industrial automation

- Power supply
- I/O modules
- Industrial controller



Professional equipment

- Testing equipment
- Measuring equipment
- Multiplexer



Energy

- Energy storage systems
- Isolation monitoring
- Metering



For further Information, please contact info@eu.panasonic.com