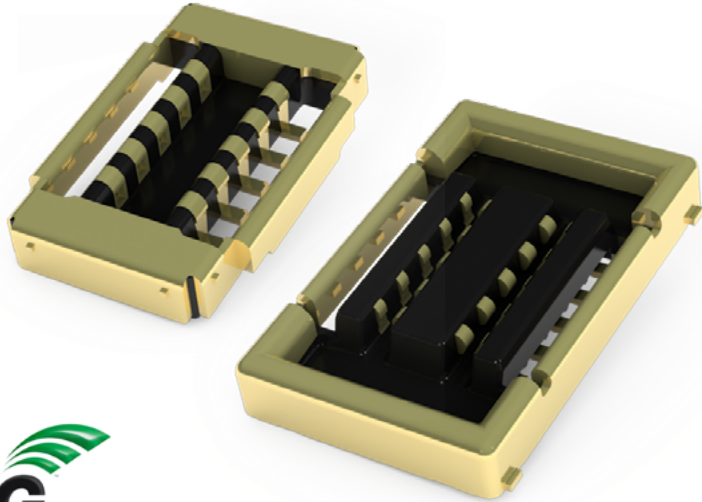


RF35 Board to FPC Connector for 5G HF applications



Features

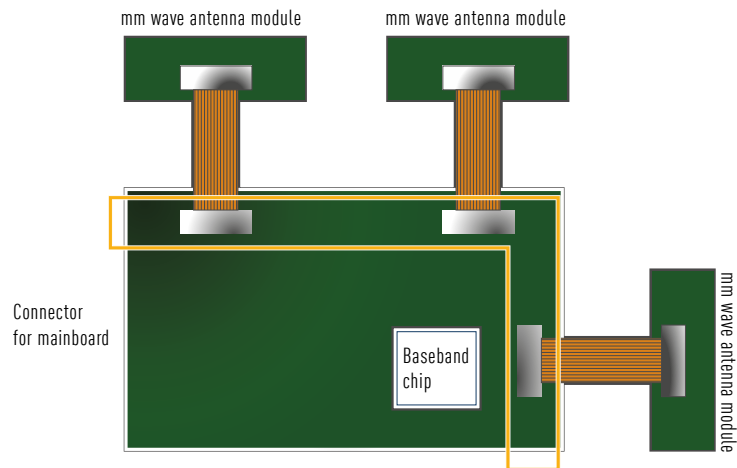
- Excellent RF transmission performance, EMI and EMS characteristics
- Tough contact structure achieves high retention force and contact reliability
- Fully-shielded structure in both socket and header significantly improves EMI characteristics
- Insert molded metal shield prevents the flange part breakage

Specs

- Terminal pitch : 0.35mm
- Mated height : 0.6mm
- Frequency : ~15GHz
- Number of pins : 10

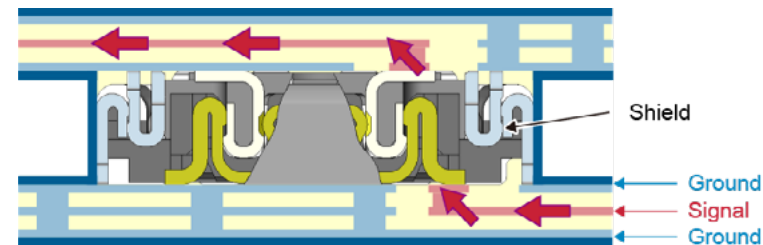
Application example

Connection between millimeter-wave modules and main board



Fully-shielded, simple lock structure

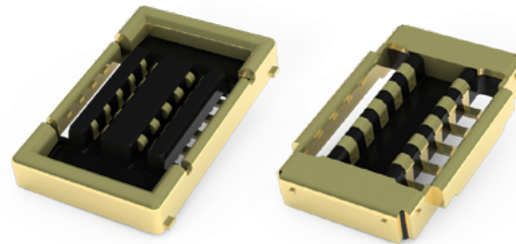
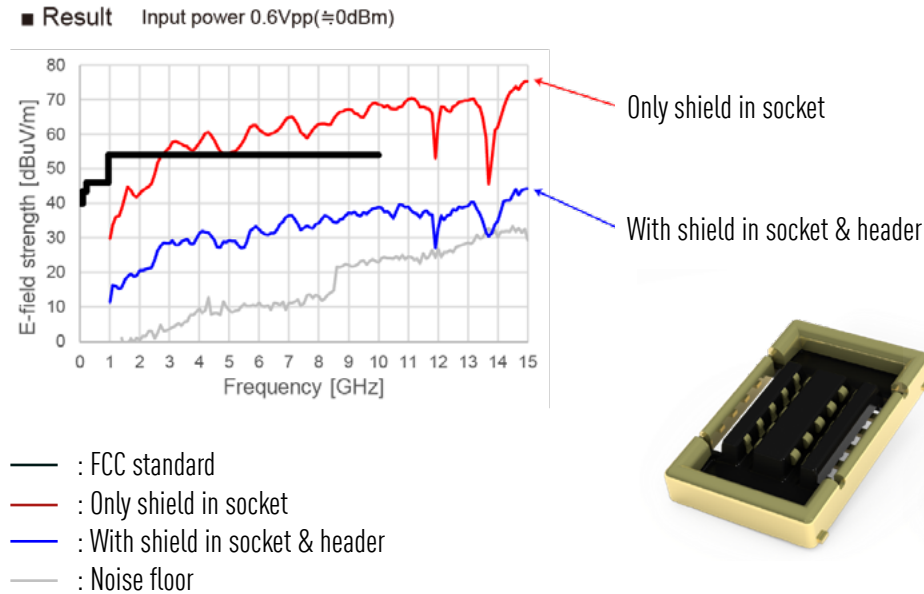
Fully-shielded structure in both socket and header



RF35 Board to FPC Connector for 5G HF applications

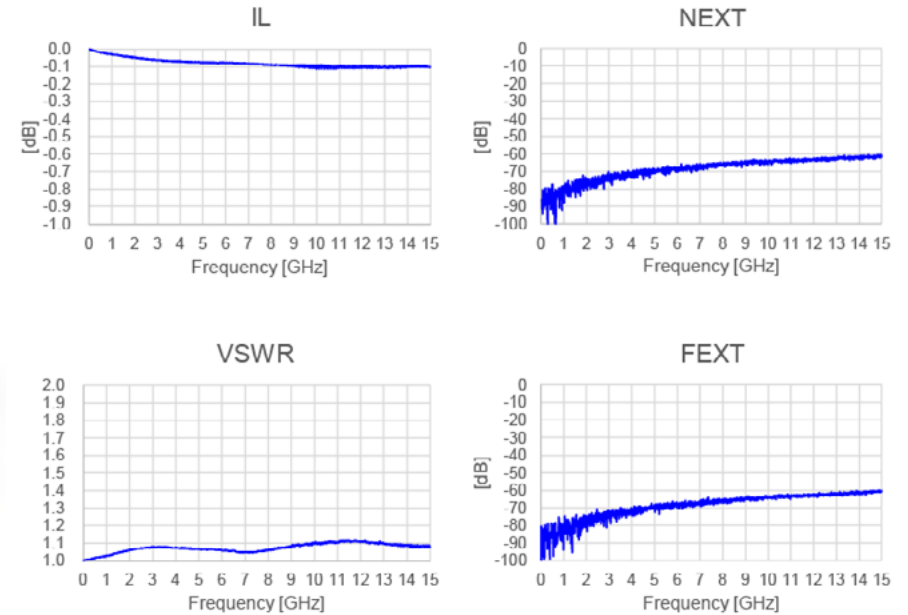
EMI characteristics test results

A fully shielded socket and header will improve the EMI characteristics of the entire unit / application as a whole and satisfy the FCC standard

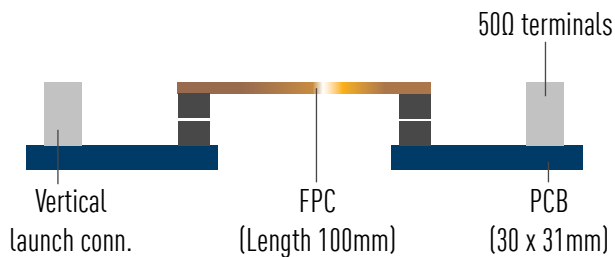


Transmission characteristics

Excellent characteristics for insertion loss (IL), near end crosstalk (NEXT), standing wave ratio (VSWR) & far end cross talk (FEXT) up to 15GHz



Testing setup



Contact us: info@eu.panasonic.com