

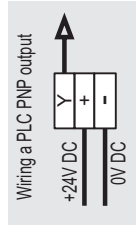
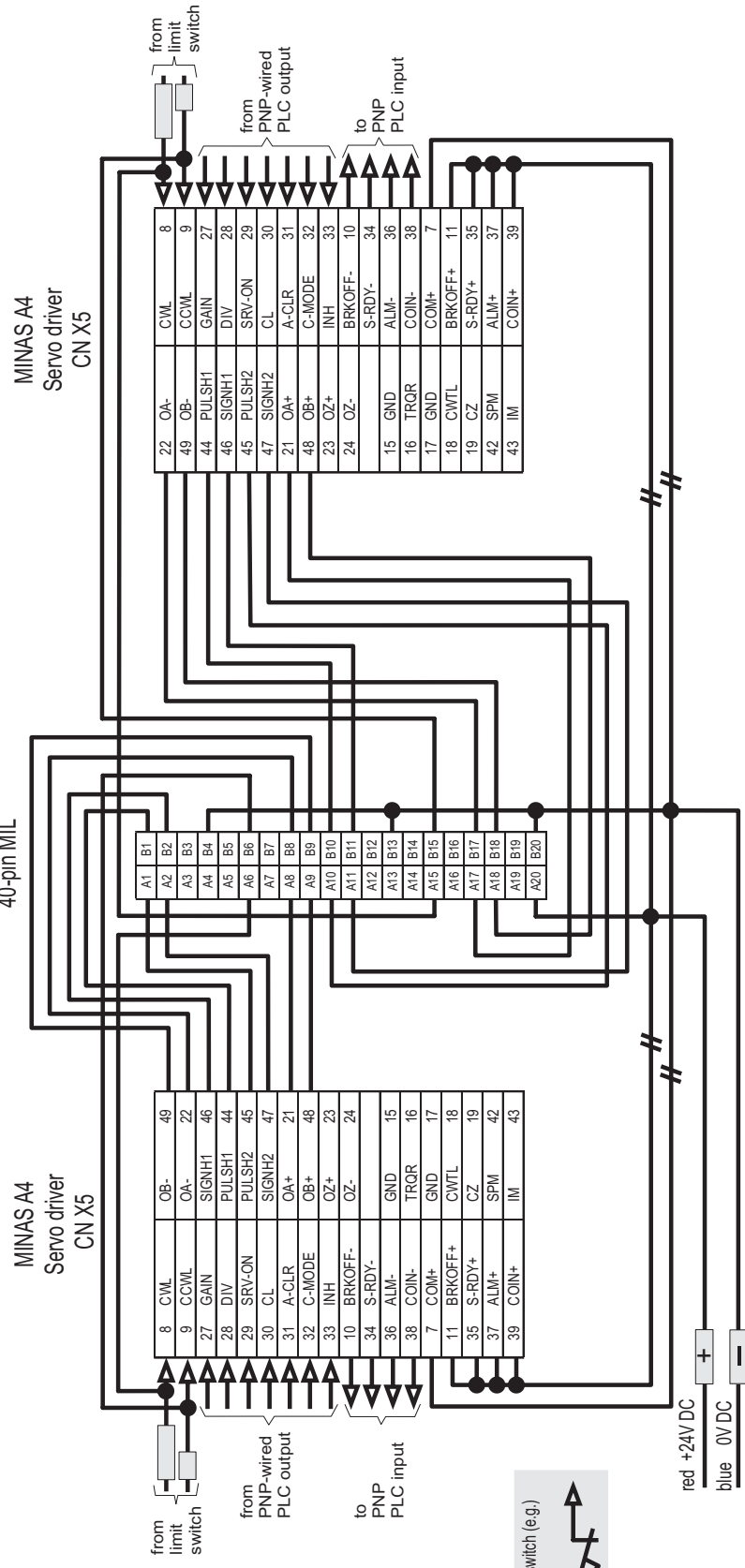
Connection cable MINAS A4/A5 servo driver to positioning unit FPG-/FP2-PPx2

2 axes, 2 x 50-pin connector, 40-pin MIL connector, loose wires for PNP I/O wiring, length L meters

Wire color assignment

Signal	Axis	CN X5 Pin	Label (ring)	Wire Color
GAIN		27	white	white
DIV		28	brown	brown
SRV-ON		29	green	green
A-CLR	1	30	yellow	yellow
C-MODE		31	grey	grey
INH		32	pink	pink
CWL		33	red-blue	red-blue
BRKOFF-		8	red, long	black
S-RDY-		9	red, short	black
ALM-	1	10		black
COIN-		34	red	violet
GAIN		36		white-green
DIV		38		brown-green
SRV-ON		28		white
A-CLR	2	29		brown
C-MODE		30		green
INH		31		yellow
CWL		32		grey
BRKOFF-		33		pink
S-RDY-		8		red-blue
ALM-	2	9		black
COIN-		10		black
+24VDC	1.2	34		blue
0VDC	1.2	36		white-green
		38		brown-green
				red
				blue

Axis 1 ← FPG-/FP2-PPx2 40-pin MIL → Axis 2



Remarks:

- This cable is designed for use with line driver output type positioning units (e.g. FPG-PPx2, FP2-PPx2) in combination with a PNP type PLC (e.g. FPG-C28P2H) or PNP type I/Os (e.g. FP2-XY64D2P).
- The mentioned wire colors refer to the connection wires only. The wire colors of the internal wiring of the connectors may be different.
- Please use the same 24VDC power supply for this cable and the connected PLC I/Os.
- Please insulate unused wires of the cable to avoid short circuits or unintended behavior.
- Set parameter Pr40=1 (i.e. use line driver input) on both MINAS A4 the servo drivers.
- Additional wiring (e.g. inputs for home or near home) to the positioning unit's connector is possible.
- For further information, please refer to the corresponding manuals.

Specification Sheet

Product Number	Description		
DVOP0986W-L	Connection cable PPx2 - 2 Servos		
Version	Date	designed by	approved
1.3	15.02.2011	Aicher	Millauer