

Panasonic®

Read these instructions carefully and carry out the installation in the prescribed manner. After installation, keep the instructions in a safe place for reference when required.

1

Use the power supply cable (AFPG805) that comes with the unit to connect the power supply.

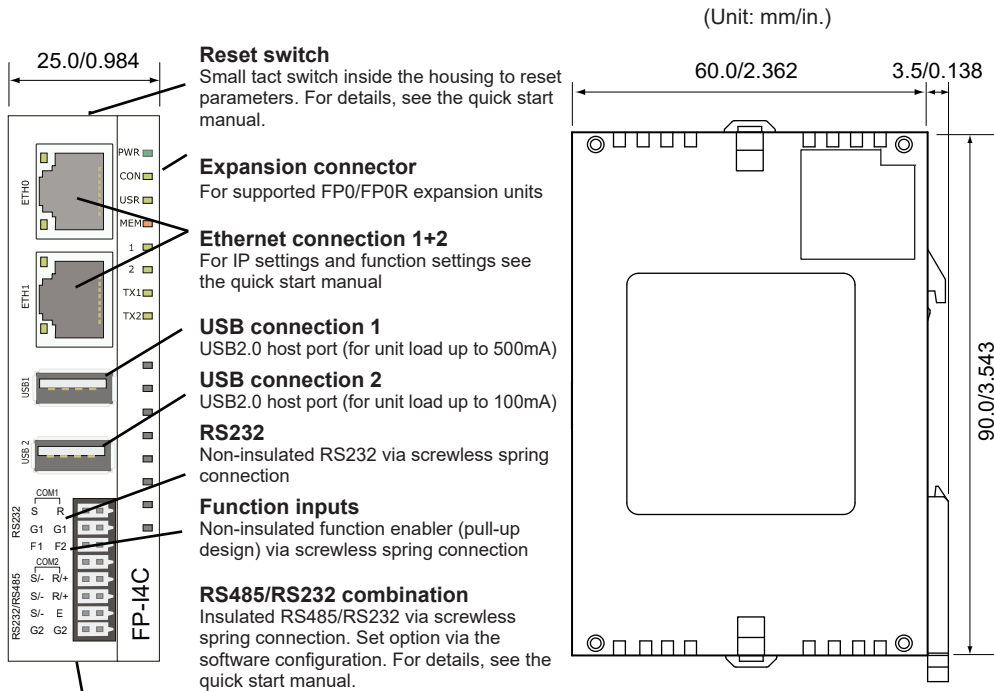
| Item | Description |
|-------------------------|------------------|
| Rated voltage | 24V DC |
| Operating voltage range | 21.6 to 26.4V DC |
| Power consumption | 240mA at 24V DC |
| Weight | 110g |

Note: Please refer to the corresponding FP-Series User's Manual and the FP-I4C Manual for a detailed explanation on connecting the power supply.

- Ambient temperature: 0 to +55°C (32° to 131°F).
- Ambient humidity: 10-95% RH (at 25°C, non-condensing).
- Places free of inflammable and/or corrosive gases.
- Places free of excessive dust, oil mist, iron powder, water and chemicals.
- Places free of excessive vibration and shock.
- Places unaffected by power transmission lines, high voltage equipment, power cables, power equipment, radio transmitters and any other equipment that might generate high switching surges. (The distance to such sources should be at least 100mm/3.937in).
- Open equipment is intended to be installed within an enclosure which protects the operator from hazards, including mechanical hazards.

- Do not touch connector pins directly to prevent static electricity from damage the unit.
- Be sure you are free of any static electricity before handling this product.

2



24V DC, use Panasonic power cable (AFPG805)

Brown = 24V DC

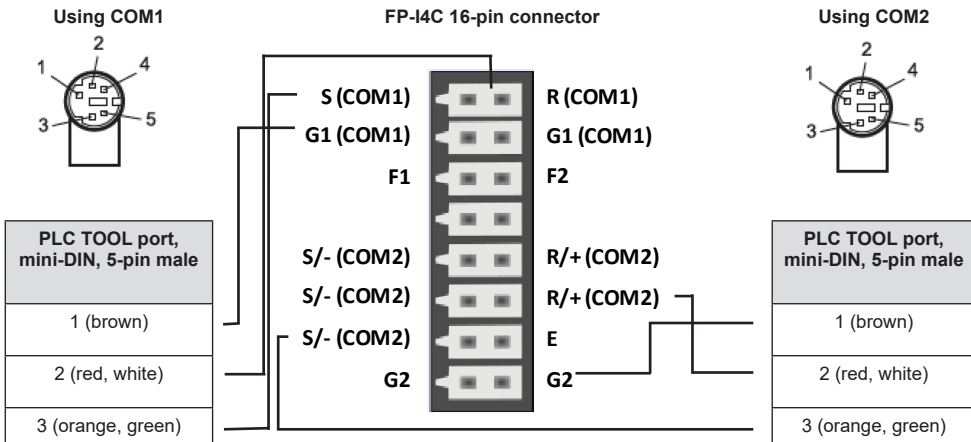
Blue = GND

Green = framing ground

Note: The green wire MUST be connected to FG

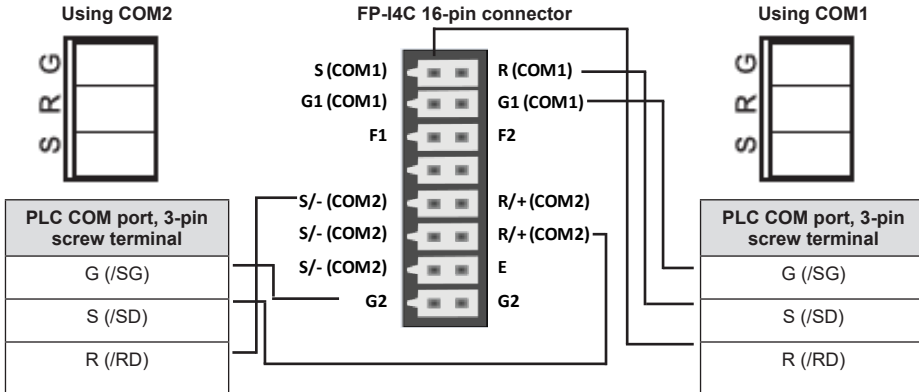
3

Use either COM1 or COM2 for communication (depending on the PLC interface settings).

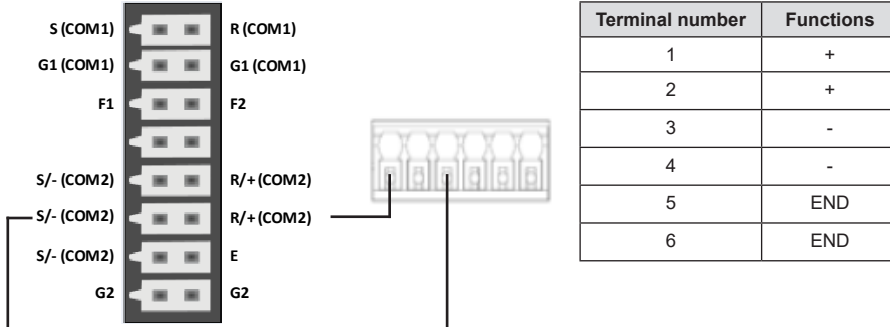


■ COM port, FP0R, FP-X, FPΣ, FP0H, FP7

Use either COM1 or COM2 for communication (depending on the PLC interface settings).



■ RS485 connection to Eco-POWER METER

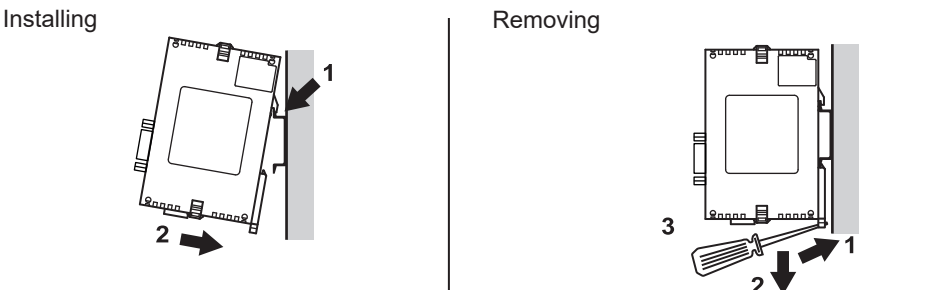


4 Installing the unit

⚠ CAUTION

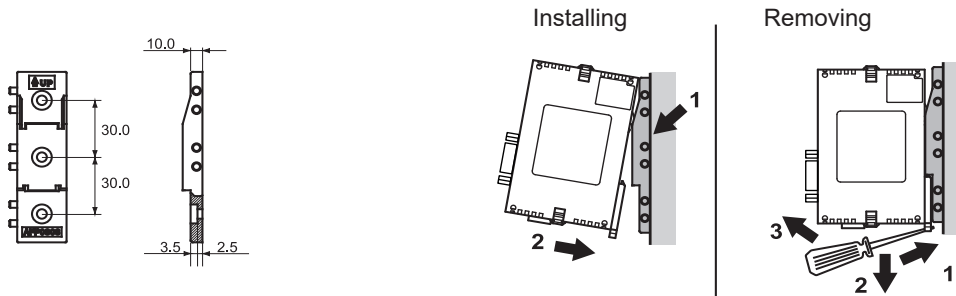
- Be sure to install the unit in a vertical position.
- Be sure to perform the installation with the power turned off.

■ DIN rail installation



■ Screw-on installation

When using the slim installation plate (AFP0803), follow the dimensions provided below and attach the plate with M4 screws. You can connect installation plates together for installing more than one unit. Proceed with installation and removal just as with the DIN rail



5 Pretrial checklist

CAUTION

- Be sure to perform the pretrial checks with the power turned off.

■ Check the following items:

- Is the unit securely fixed to the control panel?
- Are all wires firmly secured to the terminals?
- Are the connectors properly wired with respect to voltage and polarity?
- Is the green wire connected to FG?

Disposal of old equipment

Only for the European Union and countries with recycling systems



This symbol on the products, packaging, and/or accompanying documents means that used electrical and electronic products must not be mixed with general household waste.

For proper treatment, recovery and recycling of old products, please take them to applicable collection points in accordance with your national legislation. By disposing of them correctly, you will help to save valuable resources and prevent any potential negative effects on human health and the environment. For more information about collection and recycling, please contact your local municipality. Penalties may be applicable for incorrect disposal of this waste, in accordance with national legislation.