

Narrow Beam Fiber Head (Free-cut type)

Sharp bend type

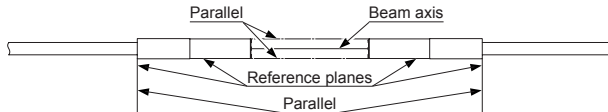
FT-KS40, FT-KV40, FT-KV26, FT-KV26H1 FT-KV40W

MJEC-FTKV40 No.0055-86V

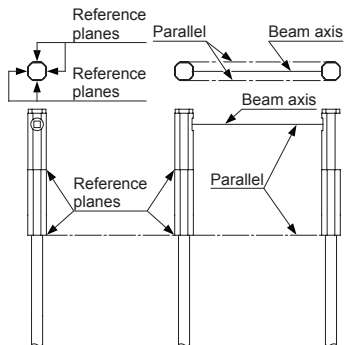
1 SETTING

- Take care that, since the aperture angle of this product is very narrow, the beam may not be received depending upon the installation conditions. At the time of installation, determine a reference plane, as shown in the figure below, and taking sufficient care against beam misalignment or tilt, install the emitting and receiving fibers so that they are parallel.

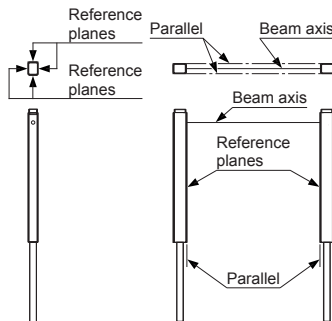
FT-KS40



FT-KV40, FT-KV40W



FT-KV26, FT-KV26H1



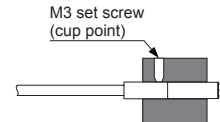
Thank you very much for purchasing Panasonic products. Please read this Instruction Manual carefully and thoroughly for the correct and optimum use of this product. Kindly keep this manual in a convenient place for quick reference.

- For the connecting method of the fiber attachment, refer to the Instruction Manual attached to the fiber attachment.
- Also read "Instruction Manual of General-purpose Fiber Head" carefully and thoroughly for the correct and optimum use.

2 MOUNTING

FT-KS40, FT-KV26, FT-KV26H1

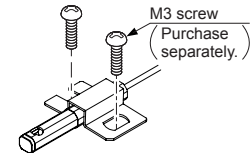
- Install the fiber, using an M3, or smaller, set screw. Also, mount FT-KS40 range of 12 to 20mm from end of mounting portion. Other than the range, the fiber will be broken.



Model No.	Tightening torque
FT-KS40	0.29N·m
FT-KV26	0.19N·m
FT-KV26H1	0.19N·m

FT-KV40, FT-KV40W

- Use an exclusive mounting bracket MS-FD-3 (accessory), and mount with M3 screws (purchase separately).



3 CAUTION

- Since the sensing portion of this product is concave shaped, take care that dust or dirt does not collect on it. In case it does collect, blow it off with air, etc.

Panasonic Industrial Devices SUNX Co., Ltd.

<http://panasonic.net/id/pidsx/global>

Overseas Sales Division (Head Office)

2431-1 Ushiyama-cho, Kasugai-shi, Aichi, 486-0901, Japan

Phone: +81-568-33-7861 FAX: +81-568-33-8591

For sales network, please visit our website.