

## Mounting Plate **MS-SG-21**

MJE-MSSG21 No.0056-67V

Thank you very much for purchasing Panasonic products. Please read this Instruction Manual carefully and thoroughly for the correct and optimum use of this product. Kindly keep this manual in a convenient place for quick reference.

### SAFETY PRECAUTIONS

In this operating instruction sheet, safety precautions are categorized to Caution:

#### ⚠ CAUTION

Caution notices are used where inattention might cause personal injury or damage to equipment.

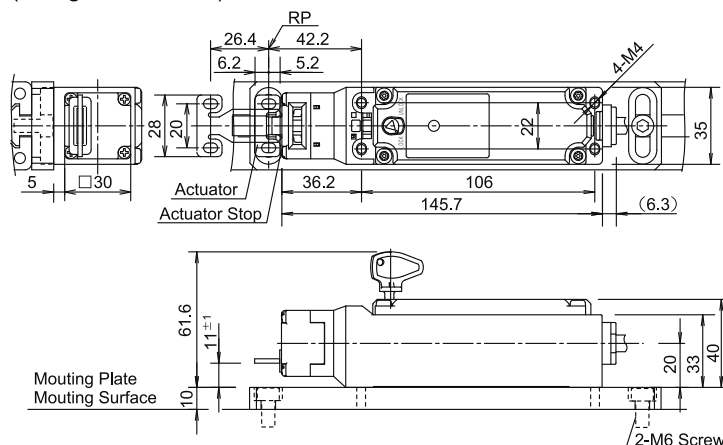
### 1 Specifications

Applicable model	<b>SG-B2</b> safety switch
Material	Anodized A6063
Weight	Approx. 180g

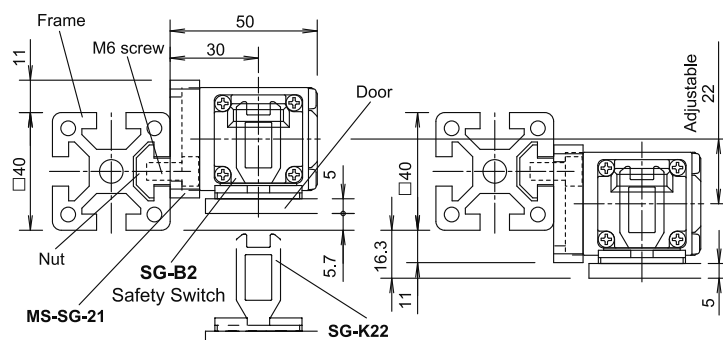
- Refer to the specifications of the **SG-B2** safety switch for the specifications of the safety switch for used.

### 2 Mounting

Installing **SG-B2** Safety Switch  
(Using the **SG-K21**)



Example Installing **SG-K22** on door (t5)



- When installing the **MS-SG-21**, mount tightly using two M6 screws.

### • Recommended Screw Tightening Torque

	Screw Tightening Torque
For mounting the <b>MS-SG-21</b> (M6 screw)	$5.0 \pm 0.2 \text{ N} \cdot \text{m}$
For mounting the safety switch (M4 screw)	$2.0 \pm 0.2 \text{ N} \cdot \text{m}$

\* Mounting bolts must be provided by the users.

#### ⚠ CAUTION

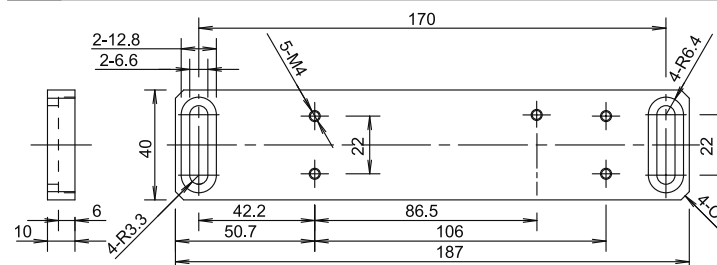
- The above recommended tightening torques of the mounting screws are the values confirmed with hex socket head bolts. When other screws are used and tightened to a smaller torque, make sure that the screws do not come loose after mounting.
- To avoid unauthorized or unintended removal of the safety switch and the mounting plate, it is recommended that the safety switch and the mounting plate are installed in an unremovable manner, for example using special screws or welding the screws.

### 3 Precautions for Operation

#### ⚠ CAUTION

- Turn off the power to the safety switch before starting installation, removal, wiring, maintenance, and inspection on the safety switch. Failure to turn power off may cause electrical shocks or fire hazard.
- Make sure strength the part where **MS-SG-21** is installed.
- Regardless of door types, do not use the safety switch as a door stop. Install a mechanical door stop to the end of the door to protect the safety switch against excessive force. Do not apply a load higher than the rated value. When a higher load is expected to work on the actuator, provide an additional system consisting of another safety switch without lock (such as the **SG-A1** safety switch) or a sensor to detect door opening and stop the machine.
- The actuator locking strength is rated at 1400N of static load. Do not apply a load higher than the rated value. (Type **SG-B2**)

### 4 Dimensions and Mounting



### 5 Precaution for Disposal

- Dispose of the **MS-SG-21** mounting plate as an industrial waste.

Panasonic Industrial Devices SUNX Co., Ltd.

<http://panasonic.net/id/pidsx/global>

Overseas Sales Division (Head Office)

2431-1 Ushiyama-cho, Kasugai-shi, Aichi, 486-0901, Japan

Phone: +81-568-33-7861 FAX: +81-568-33-8591

For sales network, please visit our website.