

Servo Drives

Quick Start Guide MINAS A6 Multi

PANATERM for Safety
Safe Torque Off (STO)



Liability and copyright

This manual and everything described in it are copyrighted. You may not copy this manual, in whole or part, without written consent of Panasonic Electric Works Europe AG (PEWEU).

PEWEU pursues a policy of continuous improvement of the design and performance of its products. Therefore we reserve the right to change the manual/product without notice. In no event will PEWEU be liable for direct, special, incidental, or consequential damage resulting from any defect in the product or its documentation, even if advised of the possibility of such damages.

Please direct support matters and technical questions to your local Panasonic representative.

Panasonic Electric Works Europe AG (PEWEU)

Caroline-Herschel-Strasse 100

85521 Ottobrunn, Germany

Tel: +49 89 45 354-1000

Table of contents

1 Introduction.....	4
1.1 Before you start.....	4
1.2 About this document.....	4
1.3 Related documents.....	4
1.4 Available software.....	5
2 Functional overview.....	6
3 Wiring.....	8
3.1 Basic wiring of the MINAS A6 Multi.....	8
3.2 Wiring of the emergency stop button.....	8
3.3 USB license dongle.....	9
3.4 Connect the PC and the driver module.....	9
4 Functional safety configuration.....	11
4.1 Install PANATERM for Safety on your PC.....	11
4.2 Create a safety program.....	11
4.3 Download the safety program to the driver module.....	14
5 Help us improve.....	17
6 Record of changes.....	18
7 Panasonic hotline.....	19

1 Introduction

1.1 Before you start

Before operating this product, read the safety instructions in the following manuals:

- [“SX-DSV03514, MINAS A6 Multi, Technical Reference – Integrated Safety Part”](#)
- [“SX-DSV03508, MINAS A6 Multi, Programming Manual – PANATERM for Safety”](#)

This product is for industrial use only.

Electrical connections must be made by qualified electrical personnel.

1.2 About this document

This “Quick Start Guide” is intended to help you set up a MINAS A6 Multi servo drive system. It is based on information from the MINAS A6 Multi series manuals and the practical experience of our engineers.

Step by step instructions will guide you through configuring and programming the Safe Torque Off function (STO) with the programming software PANATERM for Safety.

Please refer to the original documentation of our servo drive systems for detailed information. It is available free of charge in our [Panasonic Download Center](#).

1.3 Related documents

Select the following links to download the documents from our Panasonic Download Center.

- Safety specifications:
[“SX-DSV03514, MINAS A6 Multi, Technical Reference – Integrated Safety Part”](#)
- Information on wiring the MINAS A6 Multi servo drive system:
[“SX-DSV03454, MINAS A6 Multi, Reference Specifications – Driver Module”](#)
- Information on wiring the MINAS A6 Multi power supply module:
[“SX-DSV03452, MINAS A6 Multi, Reference Specifications – Power Supply Module”](#)
- Information on EtherCAT communication:
[“SX-DSV03456, MINAS A6 Multi, Technical Reference – EtherCAT Communication Specification”](#)
- Description of the servo driver functions:
[“SX-DSV03455, MINAS A6 Multi, Technical Reference – Functional Specification”](#)
- Information on safety programming:

[“SX-DSV03508, MINAS A6 Multi, Programming Manual – PANATERM for Safety”](#)

- Information on how to reduce electromagnetic interference (EMI):
[“Recommendations for EMC-compliant wiring of servo drivers and motors”](#)
- Related Quick Start Guides:
[“QS10000, MINAS A6 Multi, Position control with Beckhoff host controller over EtherCAT”](#)
[“QS10001, MINAS A6 Multi, Ethernet over EtherCAT with PANATERM”](#)
[“QS10003, MINAS A6 Multi, Safe Stop 1 \(SS1\)”](#)
[“QS10004, MINAS A6 Multi, Safe Speed Monitoring \(SSM\)”](#)
[“QS10005, MINAS A6 Multi, Position control with Omron host controller over EtherCAT”](#)
[“QS10006, MINAS A6 Multi, Position control with TRIO host controller over EtherCAT”](#)

1.4 Available software

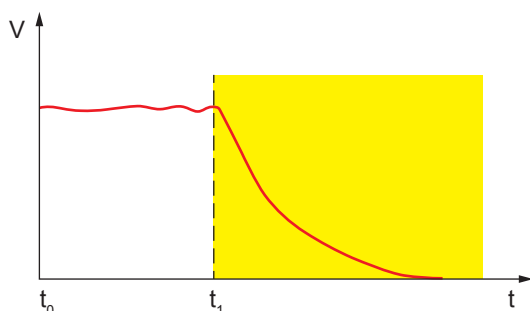
The following software is available free of charge in our [Panasonic Download Center](#):

- Programming software PANATERM for Safety for MINAS A6 Multi

2 Functional overview

The Safe Torque Off function (STO) disables the torque on the drive by immediately switching off power supply to the motor. The STO function can be used for emergency stops and to prevent unexpected restarting of the machine.

Use the programming software PANATERM for Safety to set up this function for the MINAS A6 Multi servo drive system.



Safe Torque Off (STO): Safety stop in accordance with EN 60204-1, stop category 0

$[t_0, t_1[$	Movement with initial speed
t_1	The STO function is initiated

Example

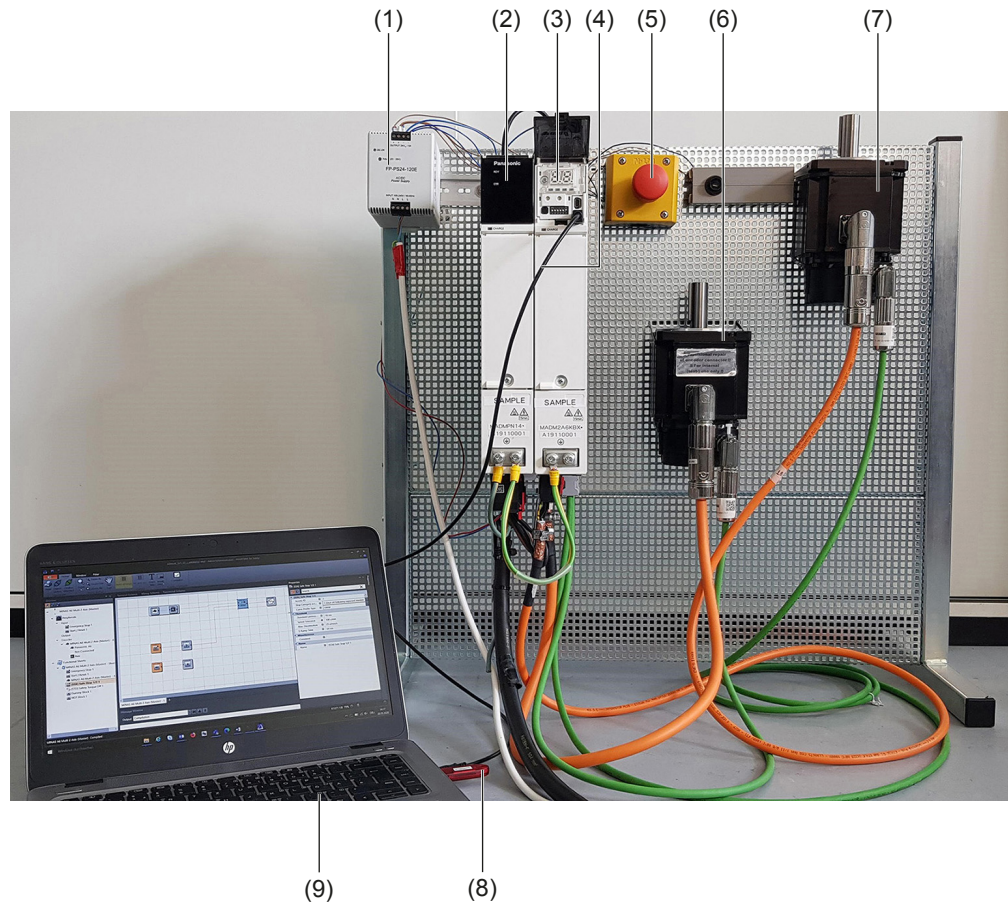
A servo drive system, consisting of a 15kW power supply module, an A-size 1.5kW two-axis driver module, and two servo motors with 1.0kW and 1.5kW, is connected to a PC by a USB cable.

An emergency stop button is connected to the MINAS A6 Multi driver module.

Use the following accessories:

- 1 x 400V AC power supply cable
Connects the MINAS A6 Multi power supply module to the main power supply (400V AC).
- 1 x 24V DC power supply cable
Connects the power supply unit (24V DC) and the host controller.
- 1 x grounding wire (M4 round terminal)
Connects the PE terminals of the power supply module and the driver module.
- 2 x Panasonic motor cable
Connects the motor and the driver module.
- 2 x Panasonic encoder cable
Connects the encoder and the driver module.
- 1 x RJ11 communication cable (2 x RJ11 plug)
Connects the power supply module and the driver module.
- 1 x feed bus bar (50mm) with end cap for the DC link bus (535V DC to 675V DC)
Connects the power supply module and the driver module.

- 1 x feed bus bar (50mm) with end cap for the control bus (24V DC)
Connects the power supply module and the driver module.
- 1 x emergency stop button connected to the driver module
- 1 x USB license dongle
- 1 x USB cable



- (1) Power supply unit (24V DC)
- (2) MINAS A6 Multi power supply module (400V AC, 15kW)
- (3) Two-axis MINAS A6 Multi driver module (1.5kW)
- (4) USB cable between PC and driver module
- (5) Emergency stop button
- (6) MINAS A6 servo motor B (1.5kW)
- (7) MINAS A6 servo motor A (1kW)
- (8) USB license dongle for PANATERM for Safety
- (9) PC with PANATERM for Safety

Set-up of a MINAS A6 Multi servo drive system - Safe Torque Off (STO)

3 Wiring

3.1 Basic wiring of the MINAS A6 Multi

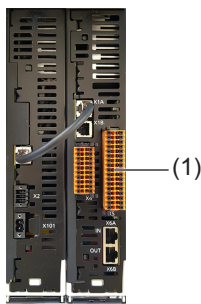
Check the hardware connections of your servo drive system:

- 24V DC control power supply connected to X11
- 400V AC main power supply cable connected to X102
- Motor cable for servo motor A connected to X105A
- Motor cable for servo motor B connected to X105B
- Encoder cable for servo motor A connected to X9A
- Encoder cable for servo motor B connected to X9B
- X1 and X1A connected with RJ11 communication cable
- Bus bars attached to X104 and X12
- PE terminals of power supply module and driver module connected by grounding wire

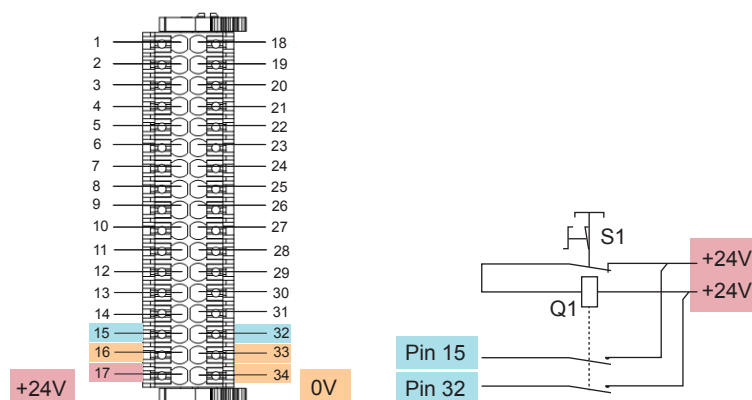
For details on how to do the wiring of the MINAS A6 Multi servo drive system, refer to “Wiring” in [“QS10000, MINAS A6 Multi, Position control with Beckhoff host controller over EtherCAT”](#).

3.2 Wiring of the emergency stop button

Connect the emergency stop button to the safety I/O signal connector (X5) of the driver module.



(1) X5: Safety I/O signal connector on driver module



Pin 15: Grouped safety digital input 1A

Pin 16: Safety input common A

Pin 17: External power supply (24V DC) for safety I/O

Pin 32: Grouped safety digital input 1B

Pin 33: Safety input common B

Pin 34: External ground

3.3 USB license dongle

A USB license dongle is required to compile and download the functional safety configuration to the driver module. Connect the license dongle to a USB port of your PC.



USB license dongle

3.4 Connect the PC and the driver module

Connect your PC and the driver module with an Ethernet cable or with a USB cable. In this example, we use a USB cable that is connected to X8 of the driver module.

X8 connector (for functional safety configuration)

Use a commercially available USB A to mini-B cable to connect the PC to the driver module.



(1) X8: USB connector on driver module

4 Functional safety configuration

4.1 Install PANATERM for Safety on your PC

The programming software PANATERM for Safety provides a graphical environment to create PLC-based monitoring programs for the MINAS A6 Multi servo drive system.

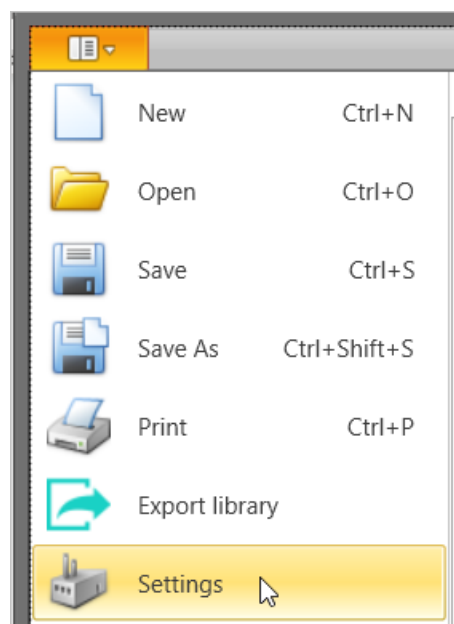
Install the software on your PC.

For details, refer to the [“SX-DSV03508, MINAS A6 Multi, Programming Manual – PANATERM for Safety”](#).

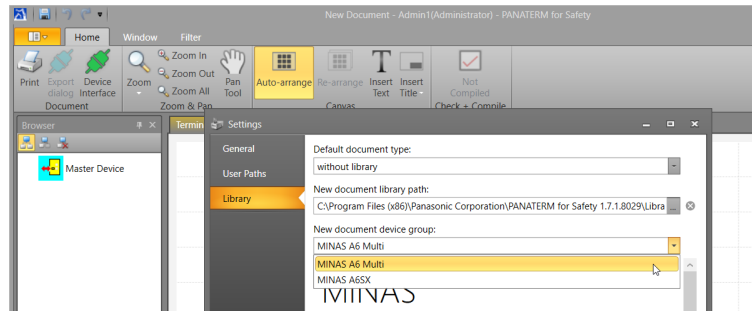
4.2 Create a safety program

The general workflow for creating a safety program is to add the devices of your servo drive system to your project, to place them in the “Terminal Scheme” screen, and to configure the safety functions in the “Functional Scheme” screen.

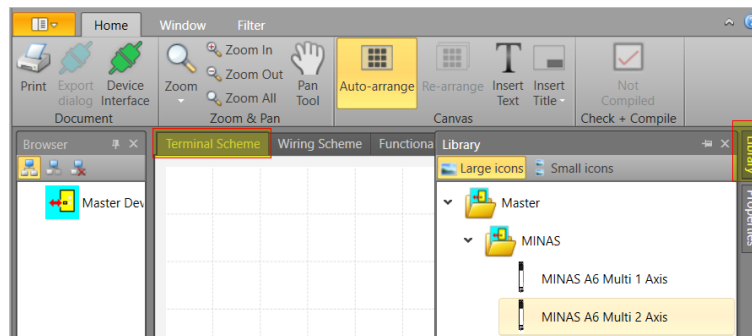
1. Start PANATERM for Safety.
2. Select the “Settings” tab.



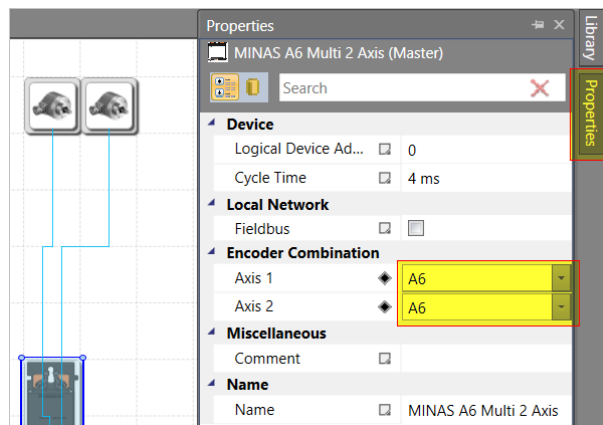
3. Select "Library" and then "MINAS A6 Multi" under "New document device group".



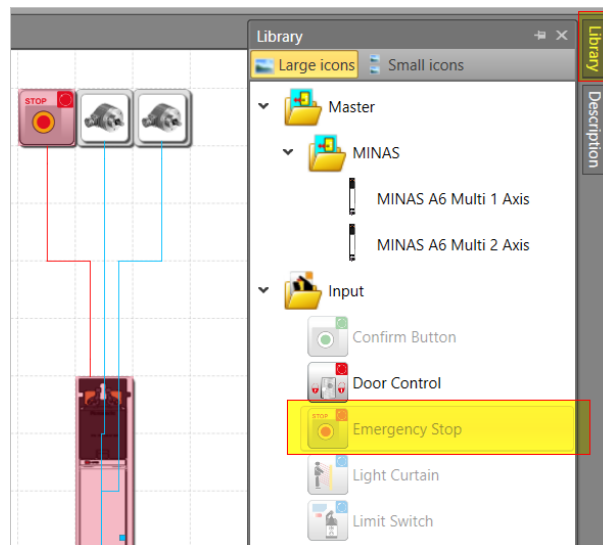
4. Select "MINAS A6 Multi 2 Axis" from the "Library" window and drag the element into the "Terminal Scheme" window.



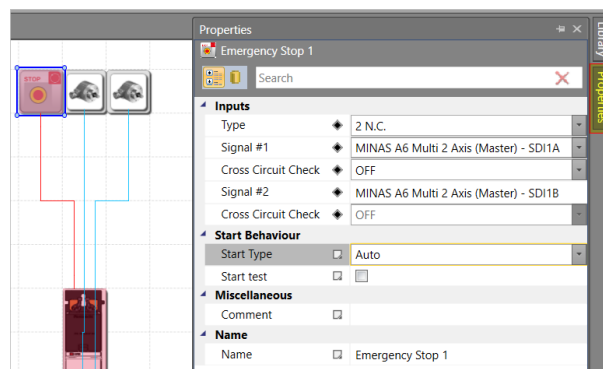
5. Go to the "Properties" window and select the A6 encoder for both axes.



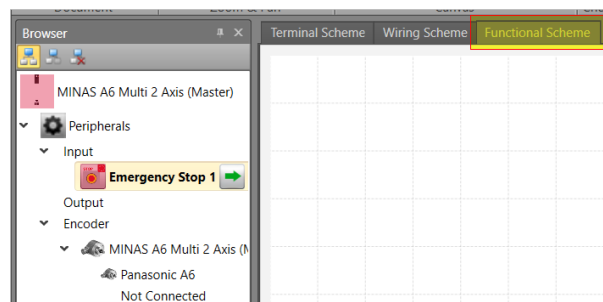
6. Go to the “Library” window, select the “Emergency Stop” element and drag it into the “Terminal Scheme” window.



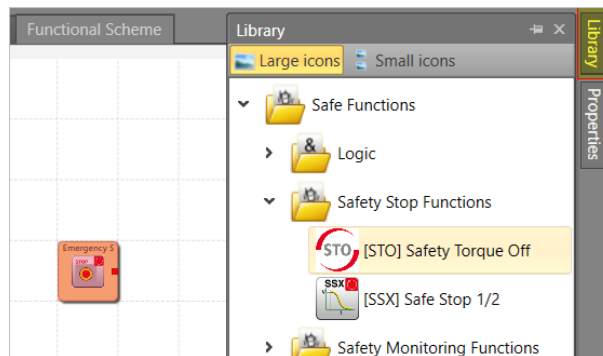
7. Select the “Emergency Stop” element in the “Terminal Scheme” window, and make the settings in the “Properties” window as shown in the screenshot.



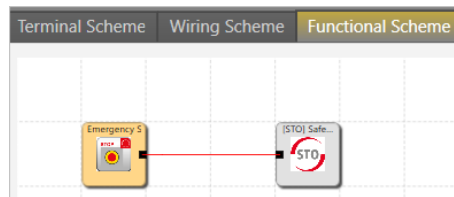
8. Go to the “Functional Scheme” window to program the functional safety.
9. Select the “Emergency Stop” element from the “Browser” window and drag it into the “Functional Scheme” window.



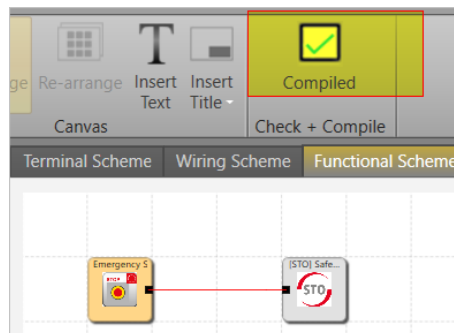
10. Select the safety function “[STO] Safety Torque Off” from the “Library” window and drag it into the “Functional Scheme” window.



11. Use the mouse to connect the elements.



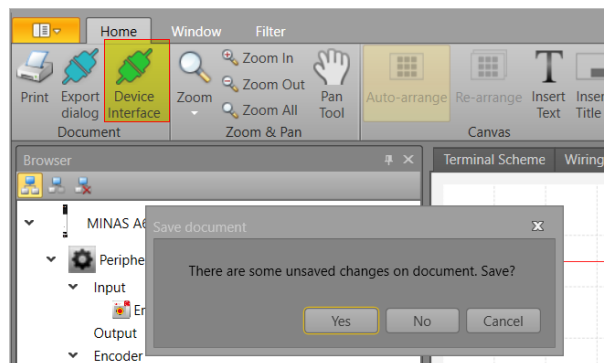
12. Select “Check + Compile” in the ribbon to compile your project



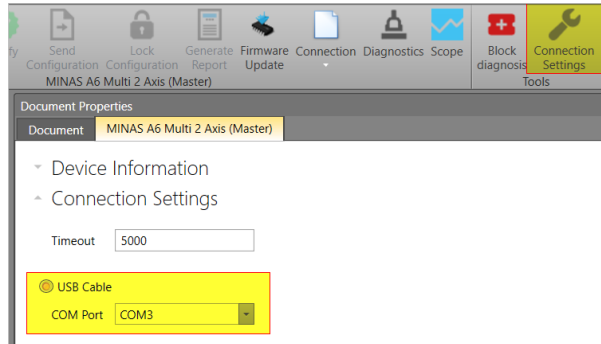
4.3 Download the safety program to the driver module

Remember that a USB license dongle is required to compile and save your program.

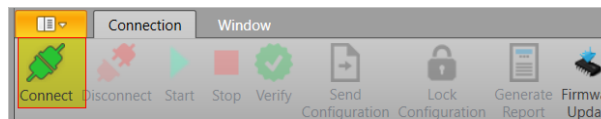
1. Select “Device Interface” in the ribbon and save your project.



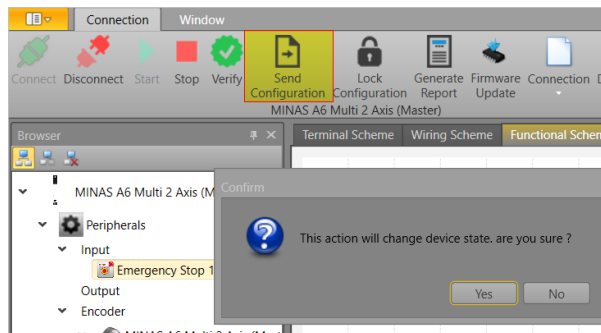
2. Select "Connection Settings" in the ribbon and then "USB Cable".



3. Select "Connect" in the ribbon.



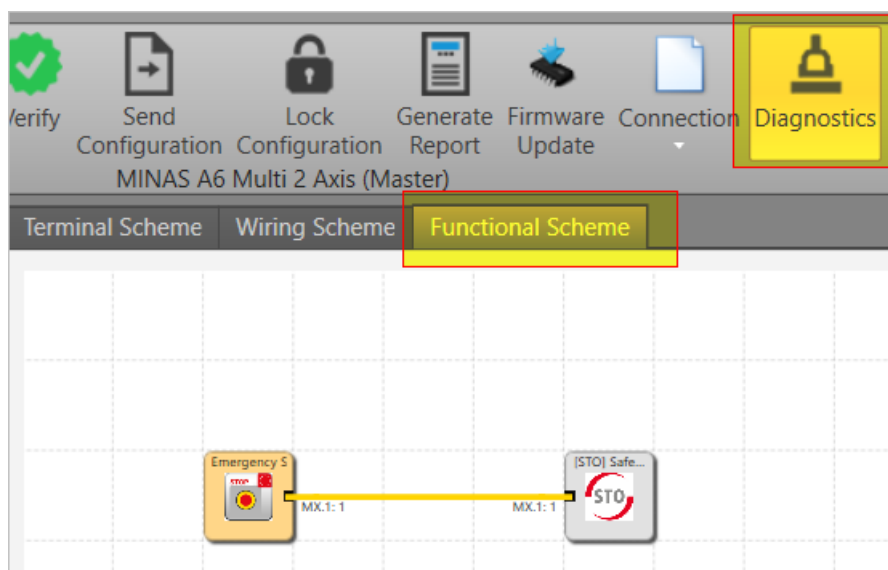
4. Select "Send Configuration" in the ribbon.
Select "Yes" to confirm the message that this action will change the device state.



5. Wait until the configuration is transmitted to the driver module and then reboot the driver module.
The safety function is now active.

6. To check the current status of the safety function, go to “Diagnostics” and select the “Functional Scheme” window.

A yellow line means that the emergency stop button was not yet pressed. If it is red, the emergency button has been pressed and STO is active.



5 Help us improve

Please feel free to contact us if you have any questions, or if you have any suggestions for improvement. In that case, we ask you to include the Quick Start Guide number in the email subject line. You can find the number starting with "QS" on the cover page.

servo.peweu@eu.panasonic.com

+49 (0) 8945354-2750

6 Record of changes

QS10002_V1.0_EN, 2020.11

First edition

7 Panasonic hotline

If you have questions that cannot be clarified by the manuals or online help, please contact your sales office.

Europe

Austria:	02236 / 2 68 46, info.pewat@eu.panasonic.com
Benelux:	0499 / 37 27 27, info.pewswe@eu.panasonic.com
France:	01 / 60 13 57 57, info.pewswef@eu.panasonic.com
Germany:	089 / 45 354 2750, servo.peweu@eu.panasonic.com
Ireland:	01 / 4 60 09 69, info.pewuk@eu.panasonic.com
Italy:	045 / 67 52 711, info.pewit@eu.panasonic.com
Scandinavia:	46 / 8 59 47 66 80, info.pewns@eu.panasonic.com
Spain:	91 / 3 29 38 75, info.pewes@eu.panasonic.com
Switzerland:	041 / 799 70 50, info.pewch@eu.panasonic.com
United Kingdom:	01908 / 23 15 55, info.pewuk@eu.panasonic.com

North & South America

USA:	1 877 / 624 7872, iasupport@us.panasonic.com
-------------	--

Asia

China:	400-920-9200, https://industrial.panasonic.cn/ea/
Korea:	+82-2-2052-1050, http://pidskr.panasonic.co.kr/
Taiwan:	+886-2-2757-1900, https://industrial.panasonic.com/
Hong Kong:	+852-2306-3128, https://industrial.panasonic.com/
Japan:	0120-394-205, https://industrial.panasonic.com/
Singapore:	+65 / 635 92128, pewapfa@sg.pewg.panasonic.com