

4.Characteristics

4-1 Detection Performance

Conditions for measuring: Ambient temperature=25°C(77°F) Operating voltage=3VDC

1) Supposing slight motion (Small movement)

| | Temperature difference | Value | Conditions concerning the target |
|----------------------------|------------------------|------------|--|
| (Note1) Detection Range | 2°C(3.6°F) | up to 3.5m | Supposing slight motion (Small movement) 1.Movement speed: 0.5m/s 2.Target concept is human head (Object size:Around 200×200mm) |
| | 4°C(7.2°F) | up to 5.0m | |
| | 8°C(14.4°F) | up to 7.0m | |

2) Supposing walking (Big movement)

| | Temperature difference | Value | Conditions concerning the target |
|----------------------------|------------------------|------------|--|
| (Note1) Detection Range | 2°C(3.6°F) | up to 8.5m | Supposing walking (Big movement) 1.Movement speed: 1.0m/s 2.Target concept is human body (Object size:Around 700×250mm) |
| | 4°C(7.2°F) | up to 12m | |
| | 8°C(14.4°F) | up to 17m | |

3) Supposing ultra slight motion (Tiny movement)

| | Temperature difference | Value | Conditions concerning the target |
|----------------------------|------------------------|------------|---|
| (Note1) Detection Range | 2°C(3.6°F) | up to 2.5m | Supposing ultra slight motion (Tiny movement) 1.Movement speed: 0.5m/s 2.Target concept is human hand (Object size:Around 100×100mm) |
| | 4°C(7.2°F) | up to 3.5m | |
| | 8°C(14.4°F) | up to 5.0m | |

Note1: Depending on the temperature difference between the target and the surroundings, detection range will change.

| | | Value | Notes |
|----------------|-----------------|-------------|---------------------------|
| Detection Area | Horizontal | 99°(±49.5°) | Refer to the section 4-5. |
| | Vertical | 99°(±49.5°) | |
| | Detection zones | 192 | |

4-2 Maximum Rated Values

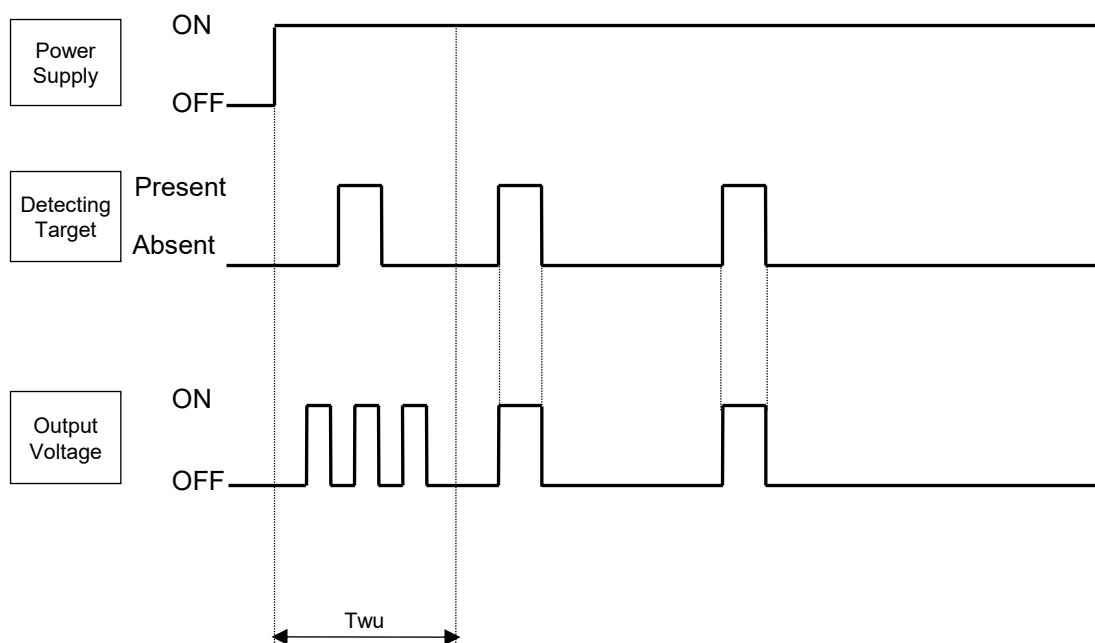
| | Value | Unit |
|----------------------------|--|------|
| Power Supply Voltage | -0.3~4.5 | VDC |
| Usable Ambient Temperature | -20~+55°C (-4~+131°F) Do not use in a freezing or condensation environment | |
| Storage Temperature | -20~+70°C (-4~+158°F) | |

4-3 Electrical Characteristics

Conditions for Measuring: Ambient temperature=25°C(77°F)

| | Symbol | Min | Avg. | Max | Unit | Special mention |
|---|--------|---------|------|-----|------|---|
| Operating Voltage | Vdd | 2.3 | — | 4.0 | VDC | — |
| Electrical Current Consumption | Iw | — | 6 | 12 | μA | Iout=0 |
| Output Current | Iout | — | — | 100 | μA | Vout≥Vdd−0.5 |
| Output Voltage | Vout | Vdd−0.5 | — | — | VDC | — |
| Circuit Stability Time (when voltage is applied) | Twu | — | — | 10 | s | This is when temperature of the sensor is stable. |

4-4 Timing Chart



【Durations】

Twu:Circuit Stability Time=About 10s. (max.)

During this stage, the output's status is undefined (ON/OFF) and detection is therefore not guaranteed.

Catalog No.

EKMB430981□K

Name

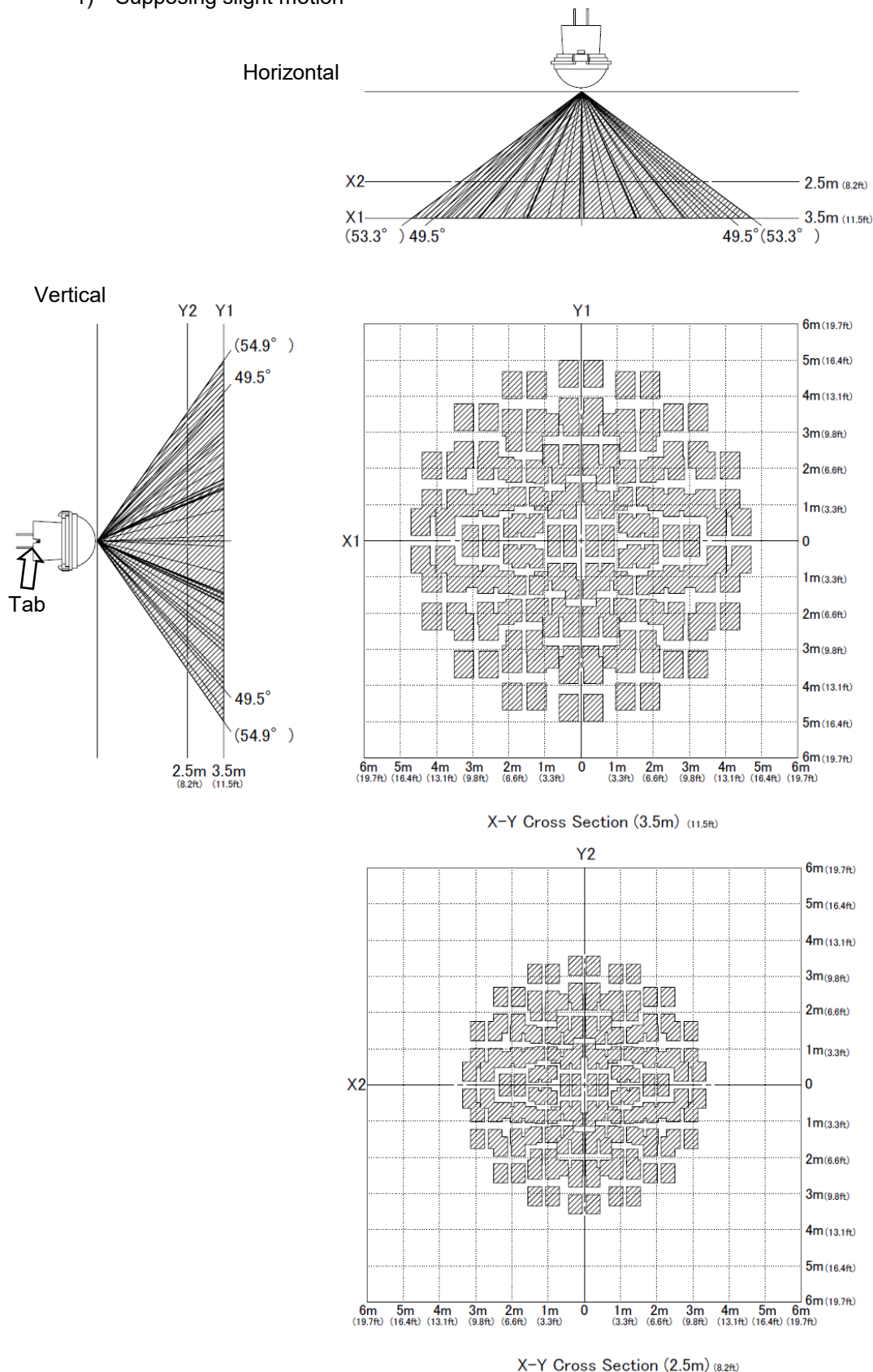
PIR MOTION SENSOR "PaPIRs" WL series
 PaPIRs+ model Ultra slight motion detection type
 (6μA / Digital output / High sensitivity)

Rev.

1.1

4-5 Detection Area(Reference)

1) Supposing slight motion



Catalog No.

EKMB430981□K

Name

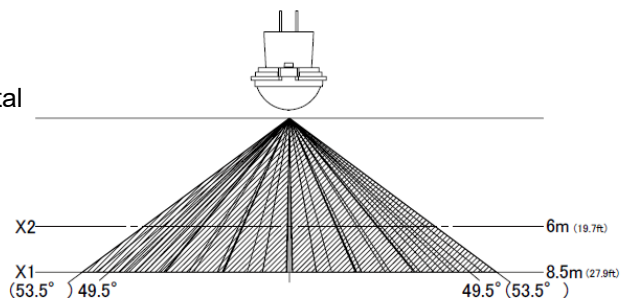
PIR MOTION SENSOR "PaPIRs" WL series
PaPIRs+ model Ultra slight motion detection type
(6μA / Digital output / High sensitivity)

Rev.

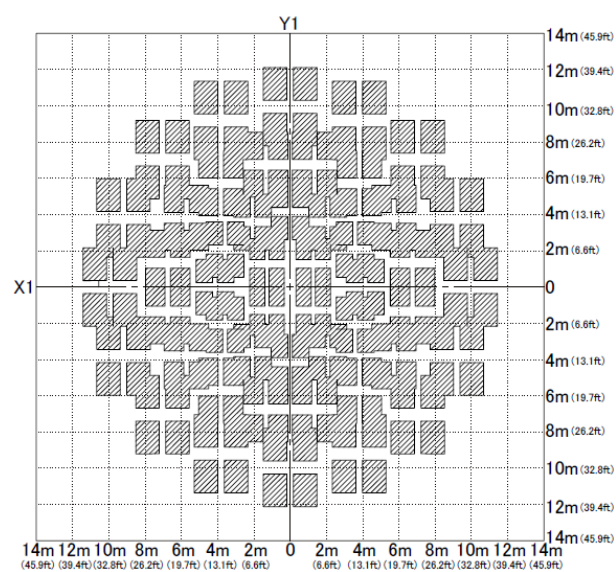
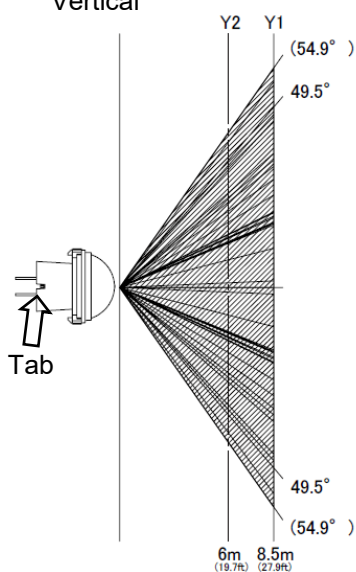
1. 1

2) Supposing walking

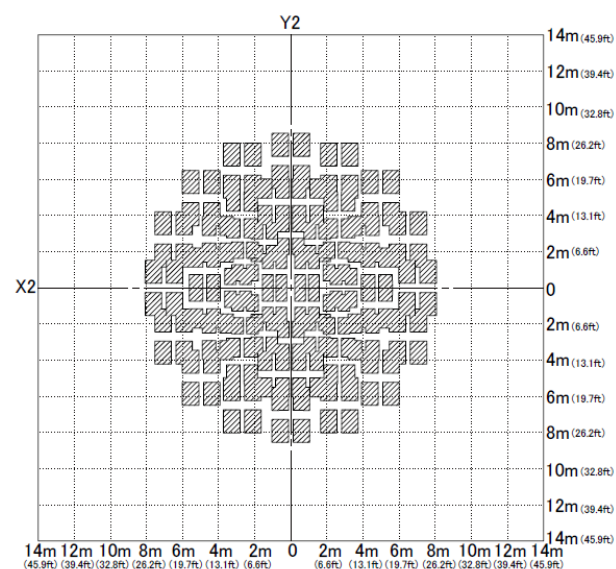
Horizontal



Vertical



X-Y Cross Section (8.5m) (27.9ft)



X-Y Cross Section (6m) (19.7ft)

Catalog No.

EKMB430981□K

Name

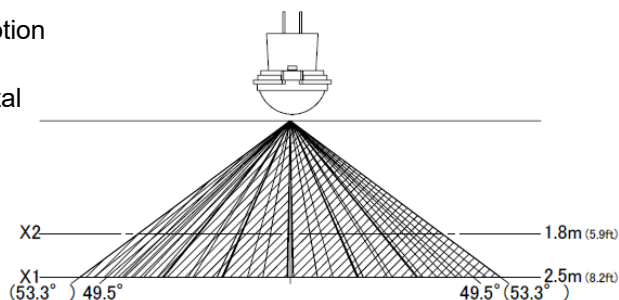
PIR MOTION SENSOR "PaPIRs" WL series
 PaPIRs+ model Ultra slight motion detection type
 (6μA / Digital output / High sensitivity)

Rev.

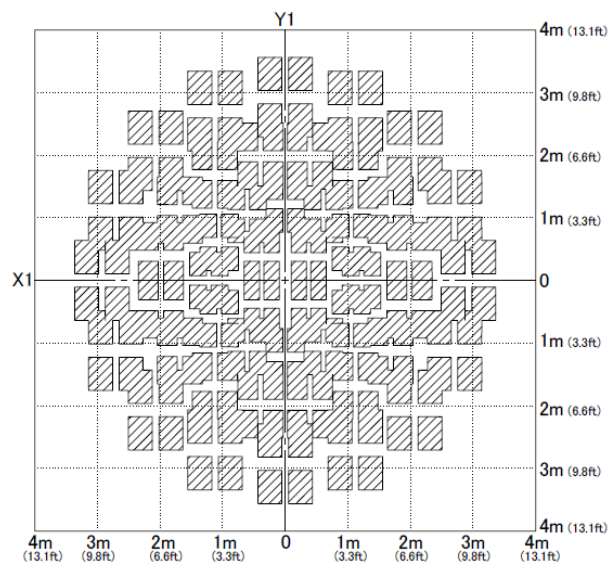
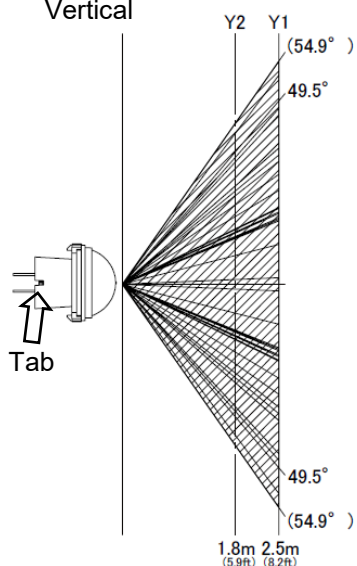
1.1

3) Supposing ultra slight motion

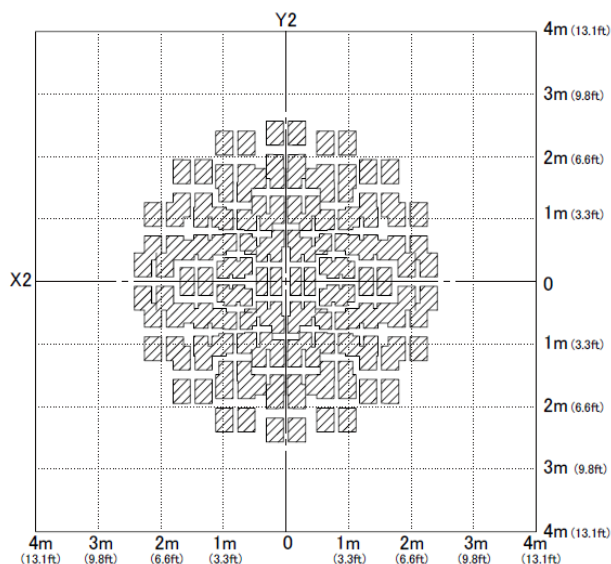
Horizontal



Vertical



X-Y Cross Section (2.5m) (8.2ft)



X-Y Cross Section (1.8m) (5.9ft)

Catalog No.

EKMB430981□K

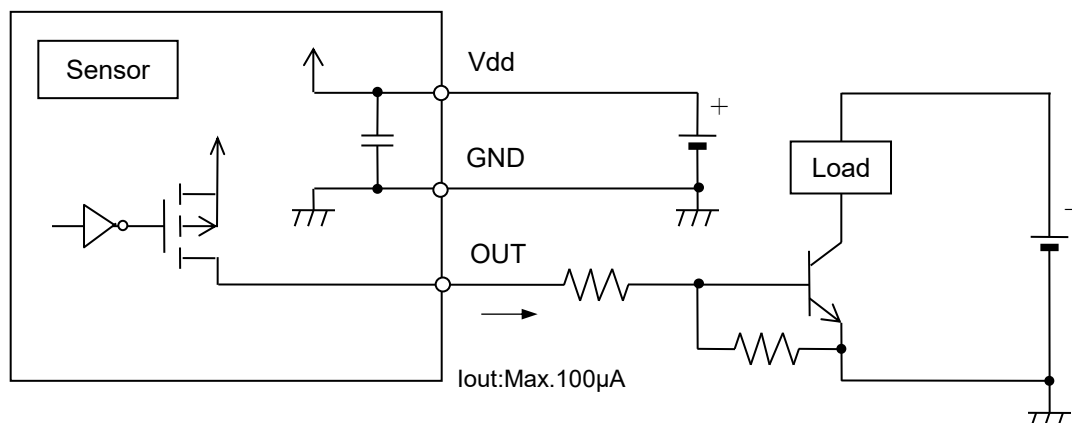
Name

PIR MOTION SENSOR "PaPIRs" WL series
 PaPIRs+ model Ultra slight motion detection type
 (6μA / Digital output / High sensitivity)

Rev.

1. 1

4-6 Wiring Diagram

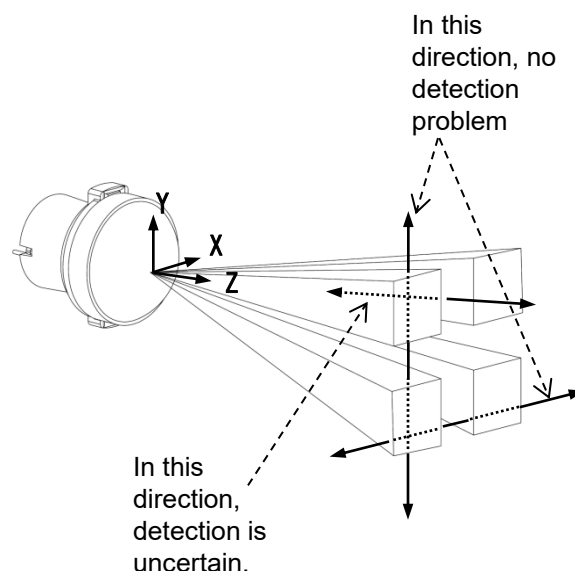


4-7 Mounting Directions

1) Direction

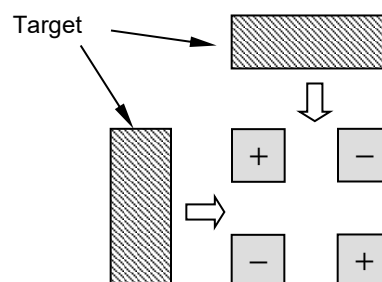
As detailed on the diagram, please install the sensor so that the expected trespassing direction corresponds to the axis X or axis Y.

In some cases, going back and forth towards the sensor (parallel movement to the axis Z), may not be detected.



2) Detection Area

As shown on the diagram, the detection zone is polarized. If a target enters the detection zones + and - at the same time, the signals are respectively cancelled and detection could become impossible at maximum detection range. (Please refer to the detection area diagram in 4-5 for details)



5. Safety Precautions

Head the following precautions to prevent injury or accidents.

- 1) Do not use these sensors under any circumstance in which the range of their ratings, environment conditions or other specifications are exceeded.
Using the sensors in any way which causes their specifications to be exceeded may generate abnormally high levels of heat, emit smoke, etc., resulting in damage to the circuitry and possibly causing an accident.
- 2) Our company is committed to making products of the highest quality and reliability. Nevertheless, all electrical components are subject to natural deterioration, and durability of a product will depend on the operating environment and conditions of use. Continued use after such deterioration could lead to overheating, smoke or fire. Always use the product in conjunction with proper fire-prevention, safety and maintenance measures to avoid accidents, reduction in product life expectancy or break-down.
- 3) Before connecting, check the pin layout by referring to the connector wiring diagram, specifications diagram, etc., to verify that the connector is connected properly.
Mistakes made in connection may cause unforeseen problems in operation, generate abnormally high levels of heat, emit smoke, etc., resulting in damage to the circuitry.
- 4) Do not use any motion sensor which has been disassembled or remodeled.
- 5) Failure modes of sensors include short-circuiting, open-circuiting and temperature rises. If this sensor is to be used in equipment where safety is a prime consideration, examine the possible effects of these failures on the equipment concerned, and ensure safety by providing protection circuits or protection devices.
Example :
 - Safety equipments and devices
 - Traffic signals
 - Burglar and disaster prevention

Catalog No.

EKMB430981□K

Name

PIR MOTION SENSOR "PaPIRs" WL series
PaPIRs+ model Ultra slight motion detection type
(6μA / Digital output / High sensitivity)

Rev.

1.1

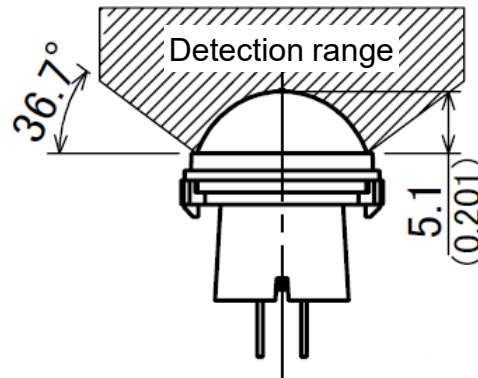
| TITLE | REFERENCE SPECIFICATION | PAGE 9 / 12 |
|--|---|---------------------|
| <p data-bbox="244 221 564 255"><u>6.Operating Precautions</u></p> <p data-bbox="280 300 518 333">6-1 Basic Principles</p> <p data-bbox="296 365 1461 492">PaPIRs is a pyroelectric infrared sensor that detects variations in infrared rays. However, it may not detect in the following cases: lack of movement, no temperature change in the heat source. Besides, it could also detect the presence of heat sources other than a human body. Efficiency and reliability of the system may vary depending on actual operating conditions:</p> <ol style="list-style-type: none"> <li data-bbox="288 524 1043 557">1) Detecting heat sources other than the human body, such as: <ol style="list-style-type: none"> <li data-bbox="319 589 837 622">a) small animals entering the detection area <li data-bbox="319 622 1484 683">b) When a heat source for example sun light, incandescent lamp, car headlights etc, or strong light beam hit the sensor regardless inside or outside the detection area. <li data-bbox="319 683 1430 745">c) Sudden temperature change inside or around the detection area caused by hot or cold wind from HVAC, or vapor from the humidifier, etc. <li data-bbox="288 779 751 813">2) Difficulty in sensing the heat source <ol style="list-style-type: none"> <li data-bbox="319 844 1433 904">a) Glass, acrylic or similar materials standing between the target and the sensor may not allow a correct transmission of infrared rays, <li data-bbox="319 904 1305 967">b) Non-movement or quick movements of the heat source inside the detection area. (Please refer to 4-1 for details about movement speed.) <li data-bbox="288 1001 707 1034">3) Expansion of the detection area <p data-bbox="319 1066 1453 1128">In case of considerable difference in the ambient temperature and the human body temperature, detection area may be wider apart from the configured detection area.</p> <li data-bbox="288 1162 668 1196">4) Malfunction / Detection error <p data-bbox="319 1227 1469 1321">Unnecessary detection signal might be outputted, on rare occasions, come from sudden outbreak output due to the nature of pyro-electric element. When the application does not accept such condition strictly, please implement the countermeasure by introducing pulse count circuit etc.</p> <p data-bbox="280 1352 836 1386">6-2 Optimal Operating Environment Conditions</p> <ol style="list-style-type: none"> <li data-bbox="288 1417 1110 1451">1) Temperature : Please refer to the maximum rated values of 4-2. <li data-bbox="288 1451 1281 1485">2) Humidity Degree : 15~85% Rh (Avoid condensation or freezing of this product) <li data-bbox="288 1485 635 1518">3) Pressure : 86~106kPa <li data-bbox="288 1518 1161 1552">4) Overheating, oscillations, shocks can cause the sensor to malfunction. <li data-bbox="288 1552 1398 1615">5) This sensor is not waterproof or dustproof. Avoid use in environments subject to excessive moisture, condensation, frost, containing salt air or dust. <li data-bbox="288 1615 900 1648">6) Avoid use in environments with corrosive gases. | | |
| Catalog No. EKMB430981□K | Name PIR MOTION SENSOR “PaPIRs” WL series PaPIRs+ model Ultra slight motion detection type (6μA / Digital output / High sensitivity) | Rev. 1. 1 |
| <div> <div>Panasonic Corporation</div> <div>(DKC-D09-D01,24,1st)</div> </div> | | |

| TITLE | REFERENCE SPECIFICATION | PAGE 10 / 12 |
|---|---|--------------------|
| <p>6-3 Handling Cautions</p> <ol style="list-style-type: none"> 1) Do not solder with a soldering iron above 350°C (662°F), or for more than 3 seconds. This sensor should be hand soldered. 2) To maintain stability of the product, always mount on a printed circuit board. 3) Do not use liquids to wash the sensor. If washing fluid gets through the lens, it can reduce performance. 4) Do not use a sensor after it fell on the ground. 5) The sensor may be damaged by ± 200 volts of static electricity. Avoid direct hand contact with the pins and be very careful when operating the product. 6) When wiring the product, always use shielded cables and minimize the wiring length to prevent noise disturbances. 7) The inner circuit board could be destroyed by a voltage surge. Use of surge absorption elements is highly recommended. Surge resistance : below the power supply voltage value indicated in the maximum rated values section. 8) Please use a stabilized power supply. Power supply noise can cause operating errors. Noise resistance : ± 10V or less (Square waves with a width of 50ns or 1μs) To reduce the effect of power supply noise, install a capacitor on the sensor's power supply pin. 9) Operating errors can be caused by noise from static electricity, lightning, cell phone, amateur radio, broadcasting offices etc... 10) Detection performance can be reduced by dirt on the lens, please be careful. 11) The lens is made of soft materials (Polyethylene). Please avoid adding weight or impacts that might change its shape, causing operating errors or reduced performance. 12) Operating "temperatures" and "humidity level" are suggested to prolong usage. However, they do not guarantee durability or environmental resistance. Generally, high temperatures or high humidity levels will accelerate the deterioration of electrical components. Please consider both the planned usage and environment to determine the expected reliability and length of life of the product. 13) Do not attempt to clean this product with any detergent or solvent, such as benzene or alcohol, as these can cause shape or color alterations. 14) Avoid storage in high, low temperature or liquid environments. As well, avoid storage in environments containing corrosive gas, dust, salty air etc. It could cause performance deterioration and the sensor's main part or the metallic connectors could be damaged. 15) Storage conditions Temperature: +5 ~ +40°C (+41 ~ +104°F) Humidity: 30 ~ 75% Please use within 1 year after products delivery. | | |
| Catalog No. EKMB430981□K | Name PIR MOTION SENSOR "PaPIRs" WL series PaPIRs+ model Ultra slight motion detection type (6 μ A / Digital output / High sensitivity) | Rev. 1.1 |
| Panasonic Corporation (DKC-D09-D01,24,1st) | | |

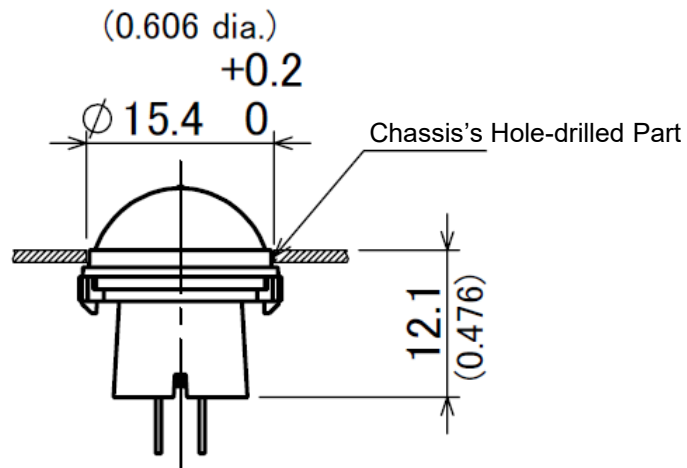
7. When Designing Your Product

To ensure that the sensor's detection capability corresponds to the specification, please install the sensor in such a way that the rounded top of the lens protrudes at least 5.1mm above the chassis (enclosure), see picture below.

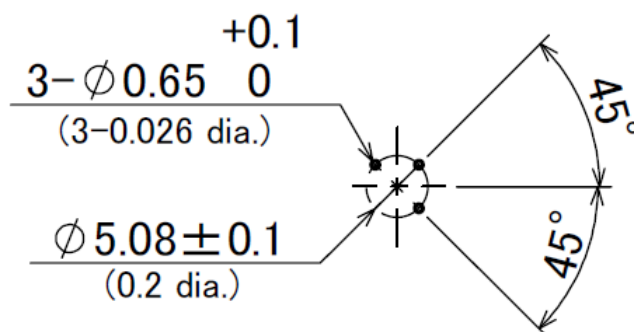
Furthermore the hole in the chassis (enclosure) needs to take the sensor's conical shape into consideration.



Recommended Hole Drilling Diameter



Recommended PCB Pattern Diagram



Catalog No.

EKMB430981□K

Name

PIR MOTION SENSOR "PaPIRs" WL series
PaPIRs+ model Ultra slight motion detection type
(6μA / Digital output / High sensitivity)

Rev.

1. 1

| TITLE | REFERENCE SPECIFICATION | PAGE 12 / 12 |
|--|---|---------------------|
| <p data-bbox="248 230 464 259"><u>8.Special Notice</u></p> <p data-bbox="253 322 1452 383">This document is only for reference, so in the case of actual consideration and adoption, please order the latest specification sheet.</p> <p data-bbox="253 418 1441 479">As improvements are continually being made, the specifications or design of this product are subject to change without notice.</p> <p data-bbox="253 515 1461 607">Please strictly follow the “Safety Precautions” and “Operating Precautions” on the specifications sheet. Normal functioning cannot be expected if used in environments or conditions other than those specified above.</p> <p data-bbox="253 642 1203 703">We are deeply committed to providing the highest quality control for this product. Nevertheless:</p> <ol data-bbox="253 770 1469 1182" style="list-style-type: none"> 1) For issues not addressed above, we invite you to share your suggestions, or details about your company’s usage conditions, installation, specifications, needs of end users, and applications for this sensor. 2) To reduce the risk of harm caused by product failure to human life or assets, this product should always be used in conjunction with other safety measures, such as protective circuitry, double layered circuit boards, etc., and used within the guaranteed performance, efficiency or special characteristics values stated in the specification sheet. 3) This product is warranted for a period of one year, from date of delivery, applicable only if the product is used in accordance with the precautions mentioned above and the specifications sheet. We will replace or repair at the delivery location any malfunctioning or defective part or entire product if such defect or malfunction is caused by us. <p data-bbox="253 1249 1128 1279">However, the above warranty shall be void in the following circumstances:</p> <ol data-bbox="292 1314 1270 1503" style="list-style-type: none"> a) Damage caused to something else than the product itself. b) Damage or loss resulting during transportation, storage or handling after the date of supply. c) Phenomenon unforeseeable in the state of the technology as of the supply date. d) Damage caused by natural or unnatural events such as fire, earthquake, flood, or conflicts beyond our control. | | |
| Catalog No. EKMB430981□K | Name PIR MOTION SENSOR “PaPIRs” WL series PaPIRs+ model Ultra slight motion detection type (6μA / Digital output / High sensitivity) | Rev. 1. 1 |
| <div> <div data-bbox="699 2159 1007 2188">Panasonic Corporation</div> <div data-bbox="1246 2159 1506 2188">(DKC-D09-D01,24,1st)</div> </div> | | |